



Rivermead Close, TW11

£1,000,000

Dexters



Rivermead Close, TW11

Occupying over 1700sq feet of generous living space is this split level three double bedroom luxury apartment within close proximity to the River Thames.

This spacious and modern apartment is set over two levels. On the first floor you are spoilt for space with three double bedrooms and ample storage along with three en-suite bathrooms.

The main living area provides an open plan kitchen diner, with floor to ceiling windows and wooden flooring. There is also a large private roof terrace.

This apartment is incredibly desirable, but if that isn't enough to tempt you there is private allocated parking and concierge service.

Located off Broom Road there is easy access to Teddington High Street and mainline station. Shops, bars, restaurants are close by along with Kingston town centre and bus routes.

Features

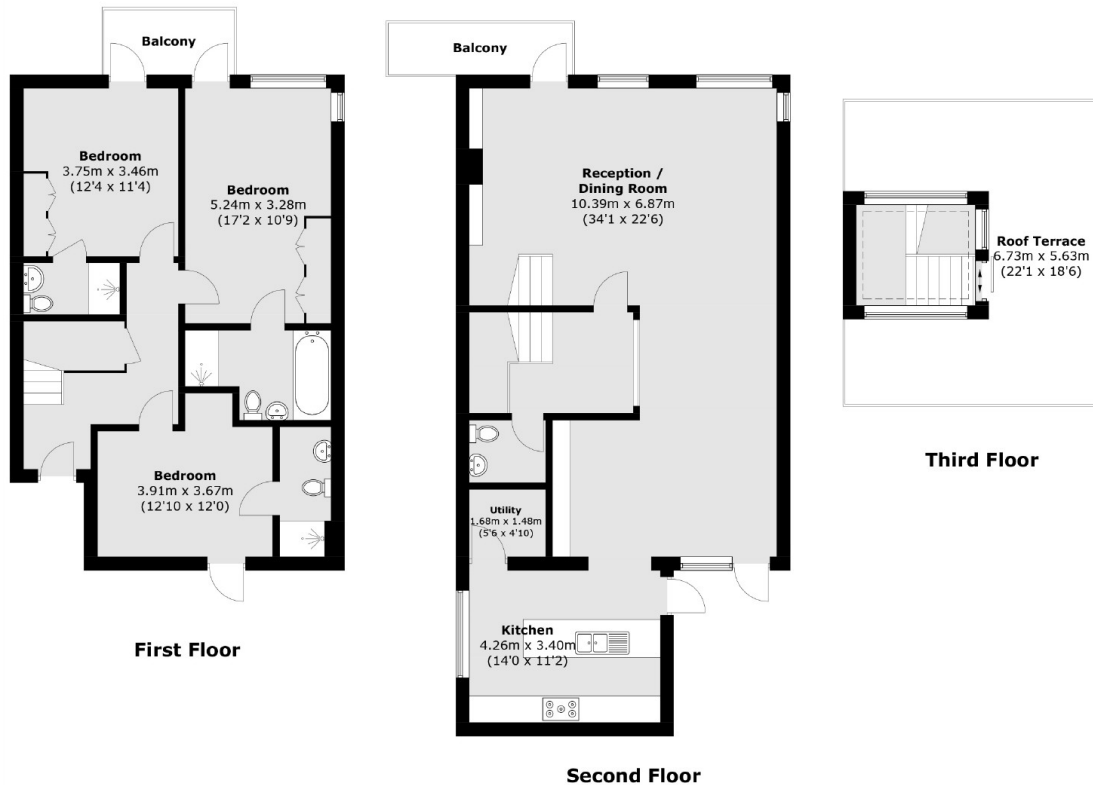
- Three Double Bedrooms
- Private Roof Terrace
- Concierge Service
- Three Bathroom
- No onward Chain
- Allocated Parking







Rivermead Close, Teddington, TW11



Total area (approx.): 162.7 sq. m (1,751.1 sq. ft)
Terrace / Balcony area : 37.9 sq. m (407.9 sq. ft)