



**Connaught Road, TW11**

**£1,150,000**

**Dexters**



## Connaught Road, TW11

This family home is located in the popular Royal Roads. Presentation is immaculate throughout, there are four bedrooms and fantastic extension to the ground floor, it is hard not to imagine living here.

The ground floor extension makes a huge difference to the set up downstairs. There is a separate front reception room with an open fire. The main living area to the rear of the property creates a kitchen/living/dining room. This is a wonderful entertaining space that has a wood burning stove, utility cupboard and two sets of bi folding doors leading out to a decked area and private garden.

To the first floor there are two large double bedrooms, both with fitted wardrobes, a modern family bathroom and a further good sized third bedroom. The fourth bedroom is on the top floor with a bespoke walk in wardrobe, an en suite shower room, a Juliet balcony overlooking the garden and also has air conditioning installed.

The decked area immediately from the kitchen has plenty of space for a seating area. This leads down to a large lawn with a large garage and storage area with electrics at the rear.

Connaught Road is perfect for transport into London. This home backs on to Alpha Park that is a lovely green space. Use Teddington High Street and Hampton Hill High Street for shopping/coffee/dining with Bushy Park close by.

### Features

- Four Bedrooms
- Two Bathrooms
- Immaculate Presentation
- South Facing Garden
- Excellent school catchment
- Close to Bushy Park







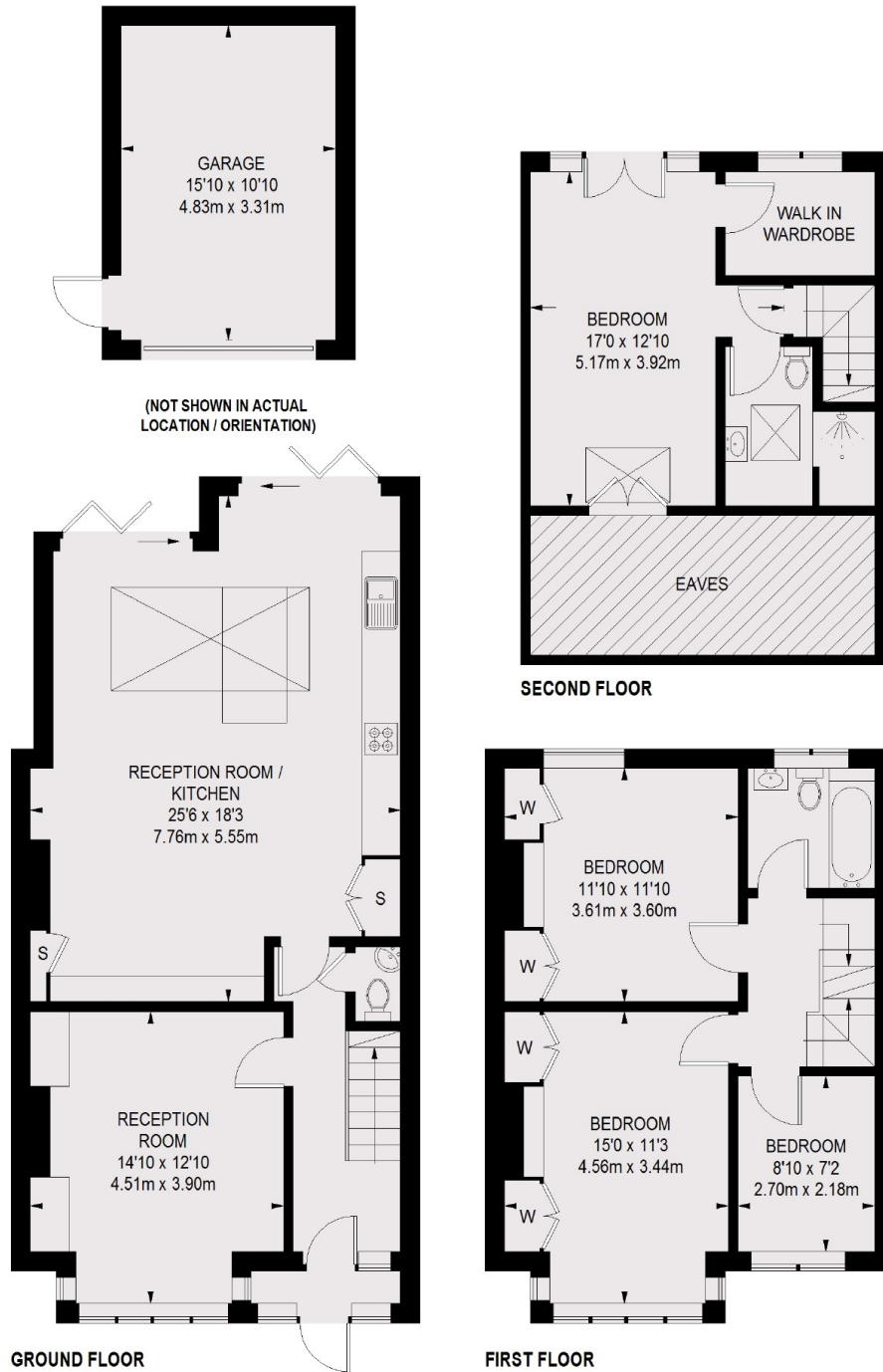








# Connaught Road, Teddington, TW11



TOTAL APPROX. FLOOR AREA  
(EXCLUDING EAVES)  
1504 SQ. FT. (139.73 SQ. M.)  
GARAGE = 177 SQ. FT. (16.44 SQ. M.)