



Cranes Park, KT5

£325,000

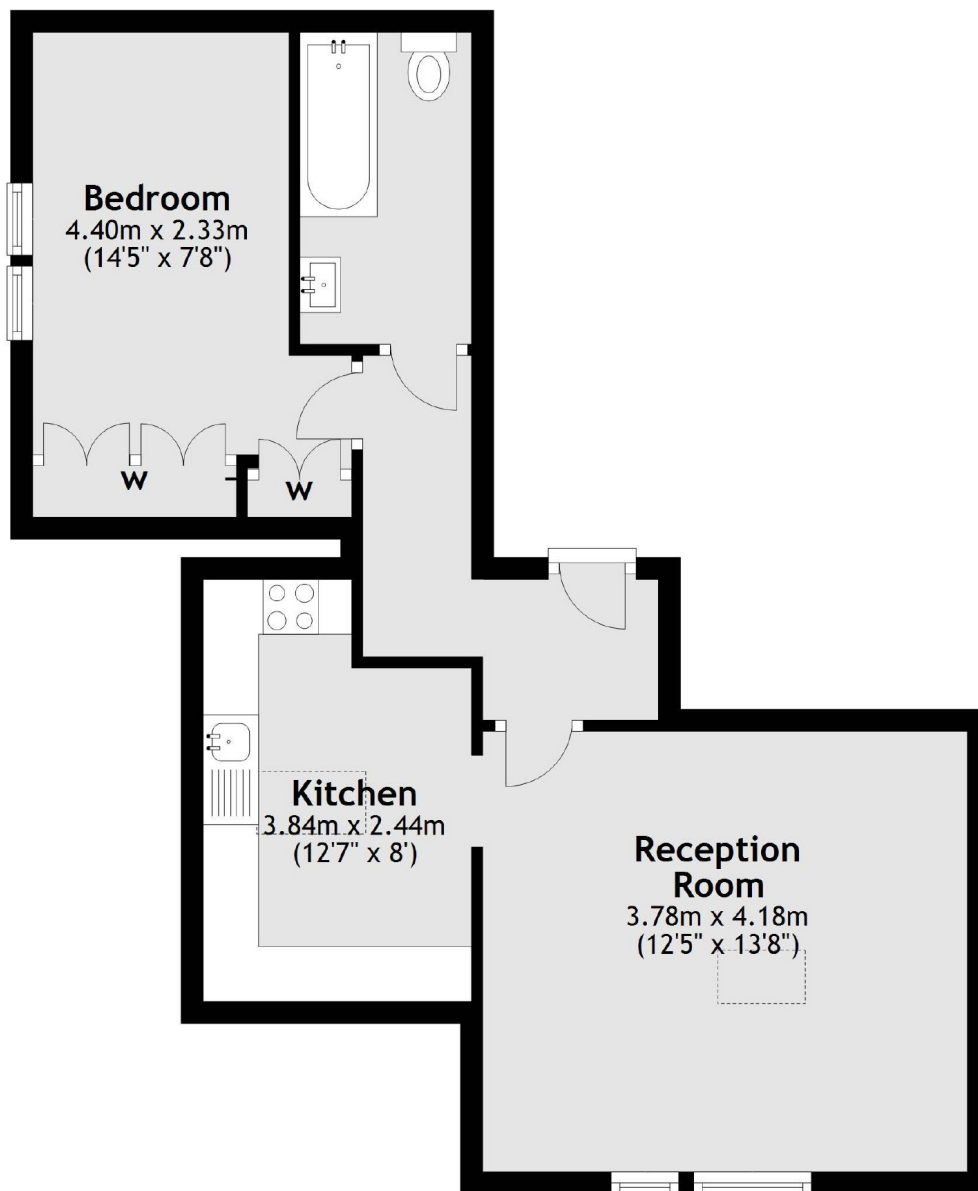
An immaculately presented one double bedroom apartment with a spacious reception room, separate modern kitchen, smart bathroom and on a desirable road in central Surbiton. This property also has access to a secure bike storage and is offered to the market with no onward chain.

In the bustling town of Surbiton, Cranes Park is perfectly placed to take advantage of Surbiton's fast train link into London Waterloo and the High Street. Kingston town centre is only 0.7 miles away.

Features

- Period Property
- One Double Bedroom
- Top Floor Apartment
- No Onward Chain
- Great Location
- Fantastic Transport Links

Cranes Park, Surbiton, KT5



Total area: approx. 46.7 sq. metres (502.7 sq. feet)