



Lenelby Road, KT6

£380,000

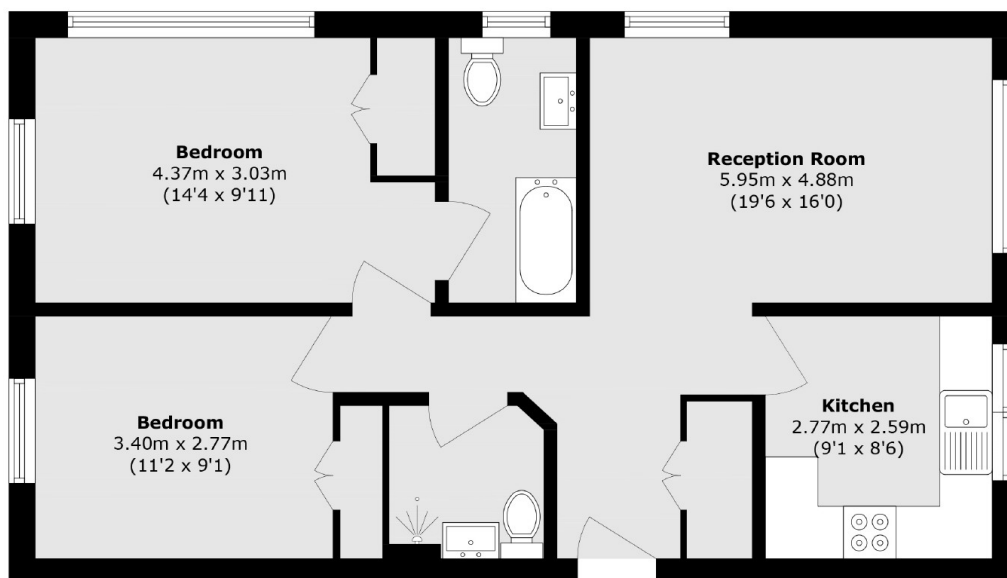
This is a well presented, bright and spacious, two double bedroom, two bathroom apartment. There is a large double aspect living/dining space with a separate smart, fitted kitchen and plenty of storage with built in wardrobes in both bedrooms.

Lenelby Road is a peaceful residential road, just over a mile away from Surbiton town centre, just over half a mile away from Tolworth train station, and has easy access to the A3. The 281 and K1 buses both run frequently to Surbiton, giving you fast and reliable access to the station and town centre.

Features

- Two Double Bedrooms
- Two Bathrooms
- Large Living Space
- Communal Gardens
- Off Street Parking
- Great Location

Lenelby Road, Surbiton, KT6



Total area (approx.): 65.0 sq. m (699.6 sq. ft)