



**Westfield Road, KT6**

**£1,075,000**

**Dexters**





## Westfield Road, KT6

A stunning Gothic church house, dating back to the 1860's and abundant in wonderful, original character. With ecclesiastical silhouettes and lead sketched glass work this property is truly special. It offers four bedrooms, three doubles and one single, open plan living space, an eat in kitchen and two bathrooms.

Entered via an ornate and original brick work porch, the house opens up into a large open plan living space with dark wood floors, high ceilings and original coving. To the rear is a newly updated spacious integrated kitchen with dining table and french doors out on to the lovely and sunny north-facing garden.

Downstairs is a double guest room and versatile space with ensuite bathroom, accessed via its own front door. Upstairs are two further double bedrooms, one single bedroom or office space, and a smart bathroom.

To the rear of the house is a lovely private garden with summer house.

Westfield Road is one of Surbiton's premier river roads with everything you need less than half a mile away, including the River Thames, desirable Maple Road, outstanding junior and primary schools, as well as Surbiton Station, which operates a fast train to Waterloo in 16 minutes.

### Features

- Unique Gothic Home
- Open Plan Kitchen/Lounge
- Four Bedrooms
- Two Bathrooms
- Private Garden
- Prime River Road Location





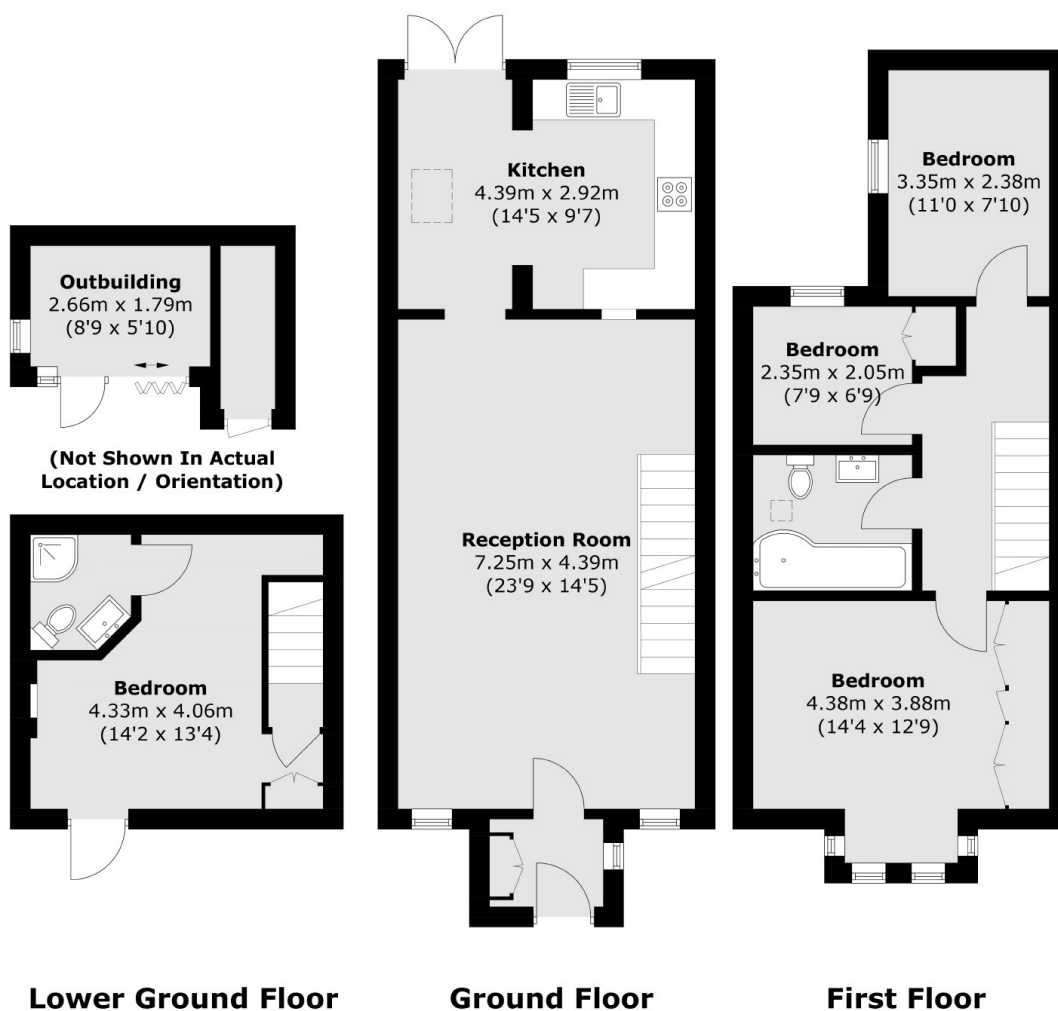








# Westfield Road, Surbiton, KT6



Total area (approx.): 110.1 sq. m (1185.0 sq. ft)  
Outbuilding: 7.1 sq. m (76.4 sq. ft)