



Ewell Road, KT6

£450,000

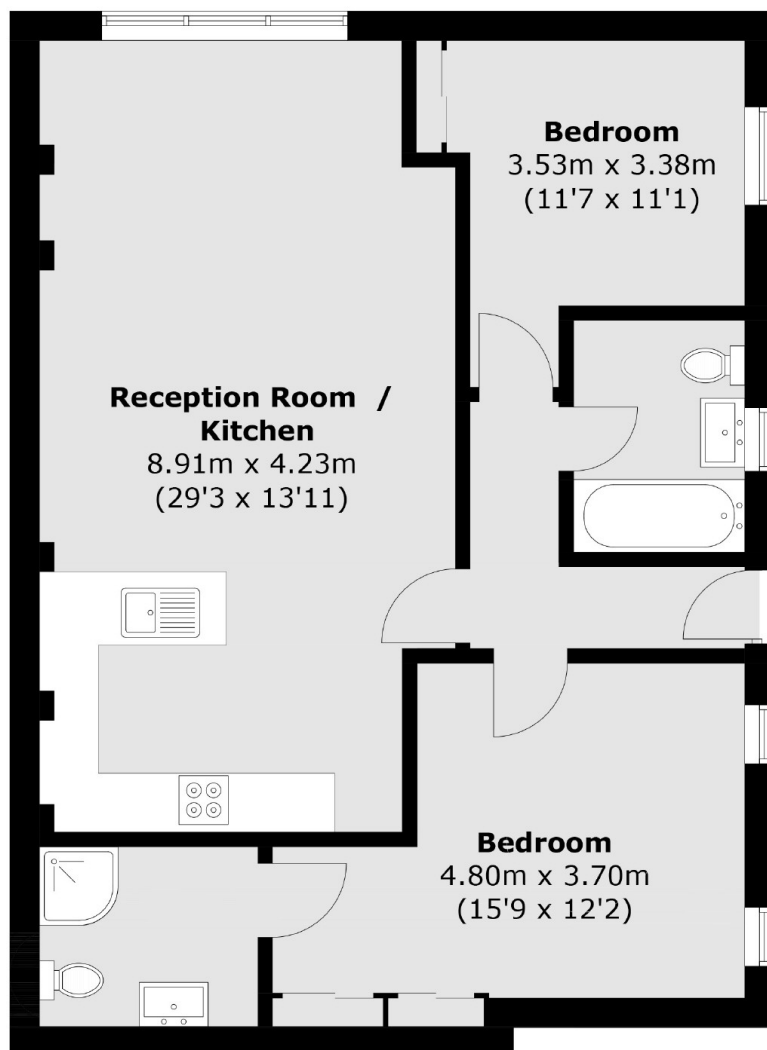
This recently refurbished, modern ground floor apartment is located in Central Surbiton. Offering two double bedrooms, two bathrooms, an open plan kitchen/reception room and communal gardens. This property is offered to the market with no onward chain.

Ewell Road offers a vast selection of gastro pubs, organic supermarkets, local shops and excellent restaurants. The mainline train station is less than half a mile away as well as Surbiton High Street.

Features

- Two Double Bedrooms
- Two Bathrooms
- Ground Floor
- Communal Garden
- Central Location
- No Onward Chain

Ewell Road, Surbiton, KT6



Total area (approx.): 71.3 sq. m (767.5 sq. ft)