



**Brighton Road, KT6**

**£679,950**

**Dexters**



## Brighton Road, KT6

Set in a modern development built this chain free, spacious two bedroom ground floor apartment is over 1200 sq ft. Presented in immaculate condition throughout, this property has two bathrooms, a private south facing garden with storage units, separate w/c and allocated underground parking.

This executive apartment comprises of an open plan kitchen with modern integrated appliance, a large reception/dining room with doors out onto a private and secluded south facing garden with rear access and storage units.

There are two stylish double bedrooms, both with en suite bathrooms and fitted wardrobes. The property also has a third w/c, ample storage and underfloor heating throughout.

There is a private south facing rear garden which benefits from rear gated access and two storage units. The development further benefits from allocated under ground car parking.

Located in the heart of Surbiton with the River Thames, the trendy Maple Road and Surbiton high street are on your door step. Surbiton station with it's fast links into London Waterloo is within half a mile and Kingston town centre is located within a mile.

### Features

- Exclusive Apartment
- Over 1200 Sq Ft
- Two Bathrooms
- Chain Free
- Long Lease
- Underground Parking







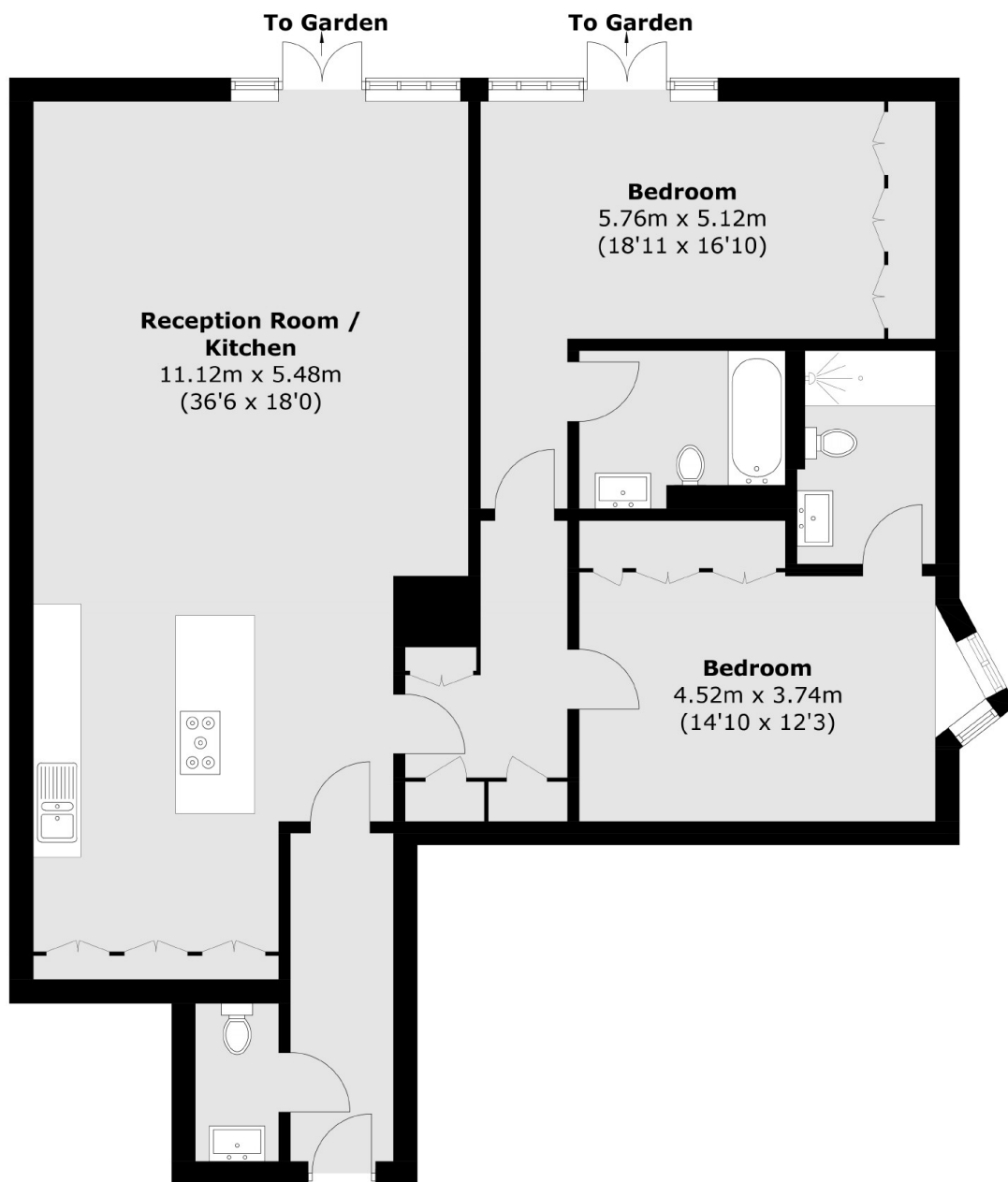








# Brighton Road, Surbiton, KT6



Total area (approx.): 119.0 sq. m (1,280.9 sq. ft)

## Dexters

Surbiton  
2 Claremont Road  
Surbiton  
KT6 4QU  
Sales  
020 8390 3939

Energy Rating: C. We aim to make our particulars both accurate and reliable. However they are not guaranteed; nor do they form part of an offer or contract. If you require clarification on any points then please contact us, especially if you're traveling some distance to view. Please note that appliances and heating systems have not been tested and therefore no warranties can be given as to their good working order.

 **RICS** | Regulated  
Estate Agent  
and Letting Agent

[dexters.co.uk](https://www.dexters.co.uk)