



**Raeburn Avenue, KT5**  
**£889,950**

**Dexters**



## Raeburn Avenue, KT5

This spacious four bedroom semi-detached family home has three reception rooms, a utility room, integral garage, two bathrooms, downstairs w/c, a pretty garden and off-street parking. There is also potential to extend further into the loft (STPP).

On the ground floor, there is a porch leading to the hallway, a downstairs w/c, a bay-fronted reception room, separate dining room with doors over looking the kitchen, a fitted kitchen, utility room and conservatory.

On the first floor, there are four good sized bedrooms and two bathrooms. There is also a large loft for storage and the potential to extend into (STPP).

Outside, there is a secluded private rear garden with a patio area, lawn and storage shed.. To the front, there is a driveway with off-street parking. To book in a viewing, please do call us on 020 8390 3939.

Raeburn Avenue is in the family-friendly area of Berrylands, approximately a mile away from four mainline train stations and in great catchment area for excellent local schools.

### Features

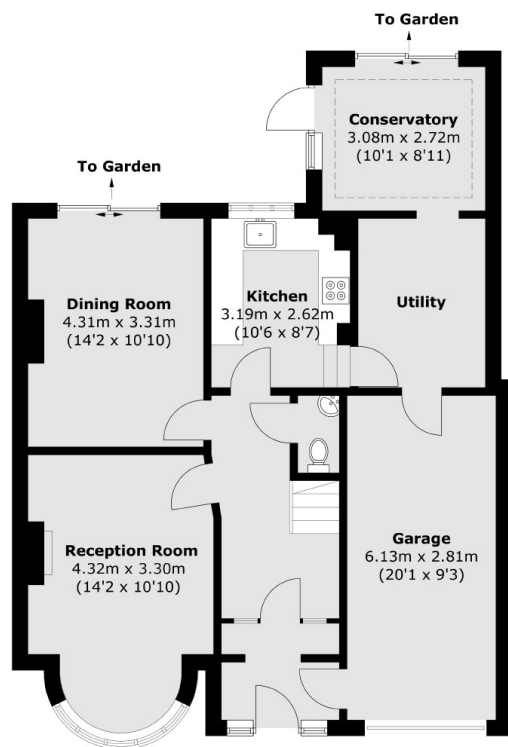
- Semi-Detached
- Three Reception Rooms
- Four Bedrooms
- Two Bathrooms
- Off-Street Parking
- Scope to Extend (STPP)



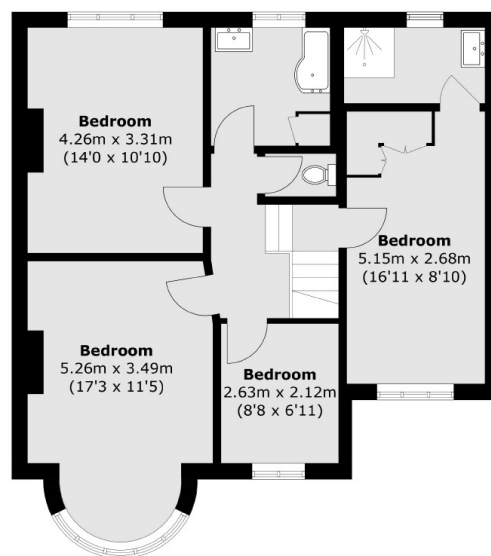




# Raeburn Avenue, Surbiton, KT5



**Ground Floor**



**First Floor**

Total area (approx.): 160.7 sq. m (1,729.7 sq. ft)  
(Including Garage)