



Manor Road South, KT10

£1,195,000

Dexters





## Manor Road South, Esher, KT10

Whether you want outside space, plenty of room to entertain or off-street parking, this property offers all of that and more. There is also potential to extend, subject to planning permission.

Whatever you fancy, from cooking up a storm for the family to just putting your feet up after a long day, the ground floor offers two reception rooms, a spacious kitchen/diner and a study.

Upstairs, there is a family bathroom and four bedrooms. Three of the bedrooms have fitted wardrobes and the master bedroom has the luxury of an en suite shower room.

The rear garden is the perfect outdoor space for the kids to play in or for you to have a family barbeque in the summer. To the front, there is also the convenience of off-street parking.

With easy access to the A3, great primary and secondary schools nearby, and Hinchley Wood train station on the doorstep, Manor Road South is a great place to live.

### Features

Detached  
Two Reception Rooms  
Four Bedrooms  
Two Bathrooms  
Off-Street Parking  
Fantastic Location





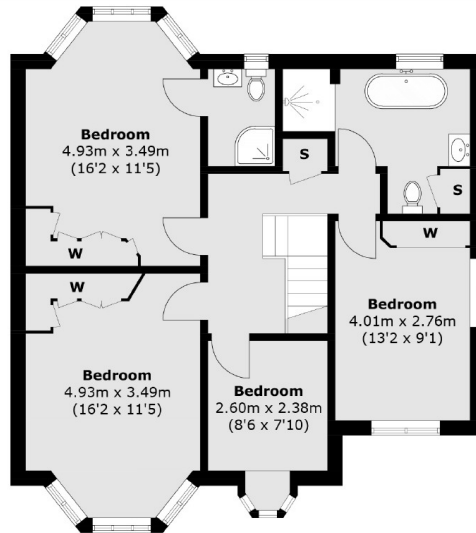




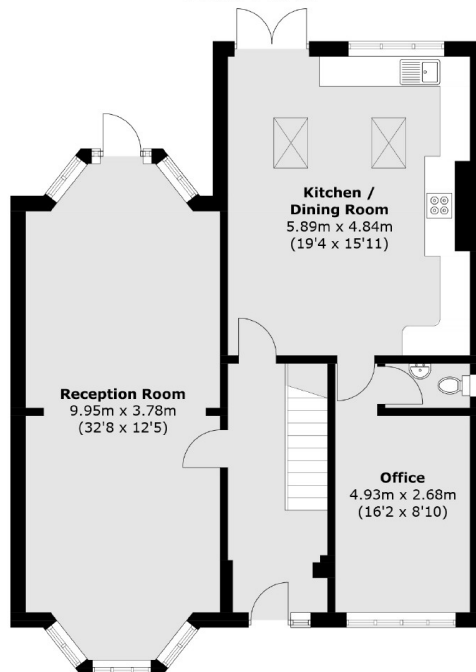




# Manor Road South, Esher, KT10



**First Floor**



**Ground Floor**

Total area (approx.): 163.9 sq. m (1,764.2 sq. ft)