



## Hawkshill Way, KT10

£3,750 Per calendar month

A family home with plenty to offer set in a fantastic location. Accommodation includes a spacious kitchen/diner, four double bedrooms, three bathrooms and off-street parking.

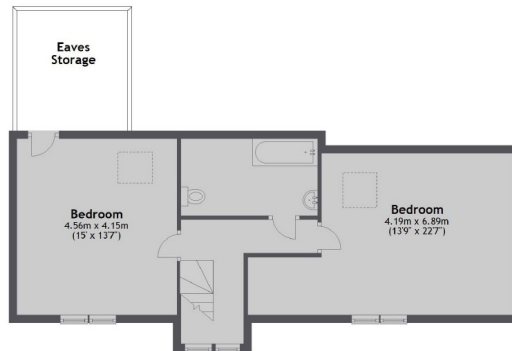
Hawkshill Way is nestled in stunning surroundings, and has local parks and cosy pubs nearby. Esher high street is just over half a mile away.

### Features

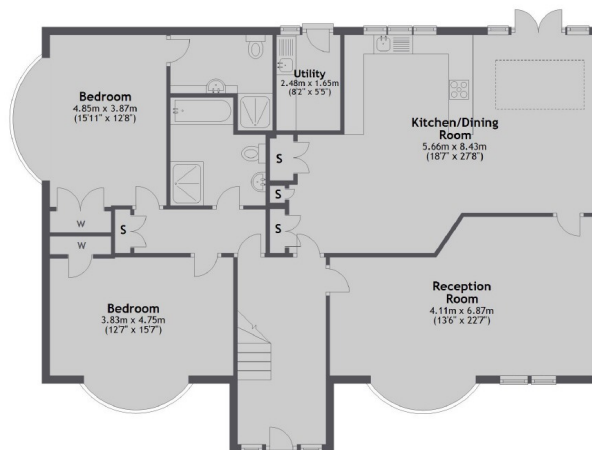
- Large Kitchen/Diner
- Four Double Bedrooms
- Three Bathrooms
- Double Garage
- Driveway
- Desirable Location

# Hawkshill Way, Esher, KT10

First Floor



Ground Floor



Total area: approx. 188.3 sq. metres (2026.6 sq. feet)

## Dexters

Surbiton  
4 Claremont Road  
Surbiton  
KT6 4QU  
Lettings  
020 8390 6544

Energy Rating: C. We aim to make our particulars both accurate and reliable. However they are not guaranteed; nor do they form part of an offer or contract. If you require clarification on any points then please contact us, especially if you're traveling some distance to view. Please note that appliances and heating systems have not been tested and therefore no warranties can be given as to their good working order.

 **RICS** | Regulated  
Estate Agent  
and Letting Agent

[dexters.co.uk](https://www.dexters.co.uk)