



## Ladywood Road, KT6

£525,000

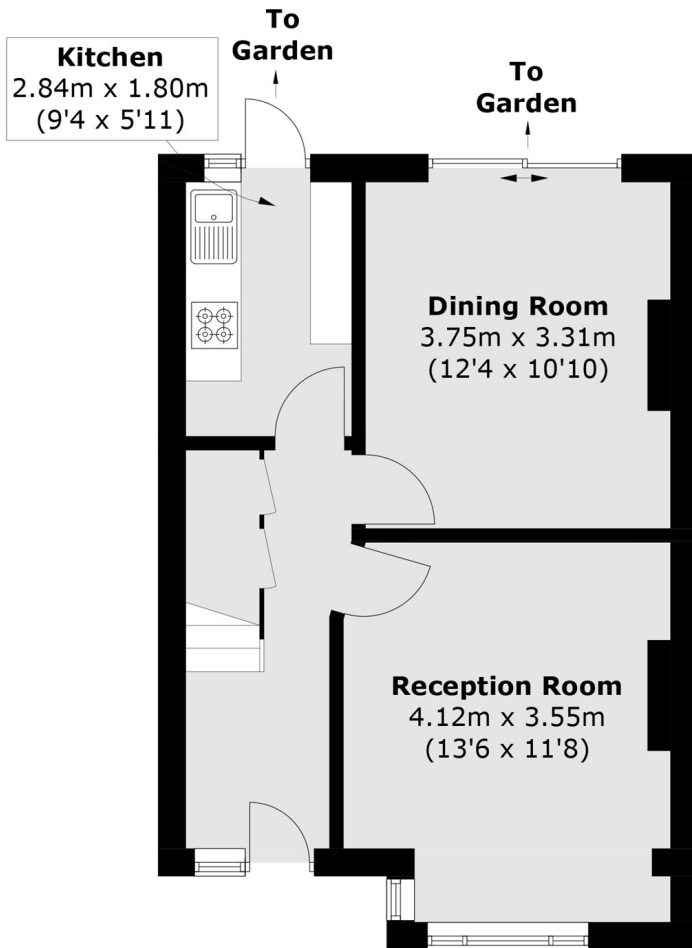
This mid terrace house is the perfect opportunity for a renovation or for someone to put their own stamp on it. It is offered to the market with no onward chain and includes two reception rooms, three bedrooms a separate kitchen, and family bathroom. There is also a large private garden and scope to extend into the loft and to the rear (STPP).

Ladywood Road is a peaceful residential road, just over half a mile away from Tolworth's mainline train station and just over one mile away from Surbiton's popular town centre.

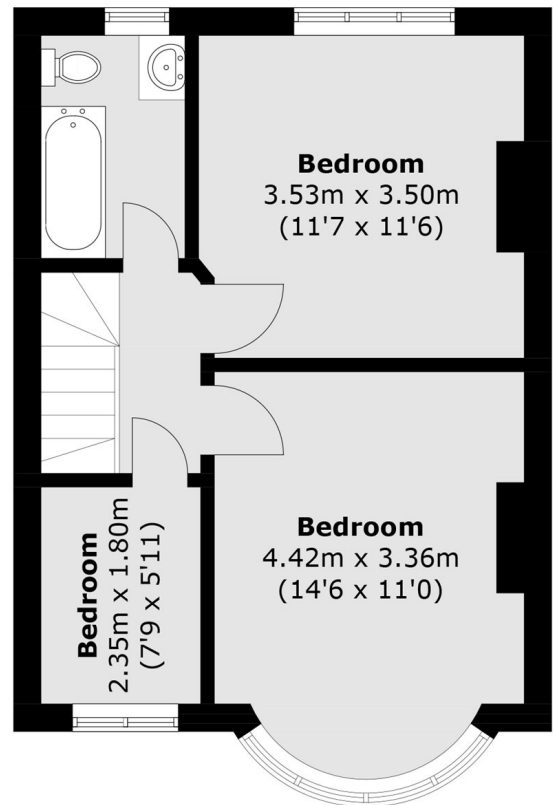
### Features

- Three Bedrooms
- Two Receptions
- Renovation Opportunity
- Scope to Extend
- No Onward Chain
- Peaceful Road

# Ladywood Road, Surbiton, KT6



**Ground Floor**



**First Floor**

Total area (approx.): 80.3 sq. m (864.4 sq. ft)