



## Portsmouth Road, KT6

### £375,000

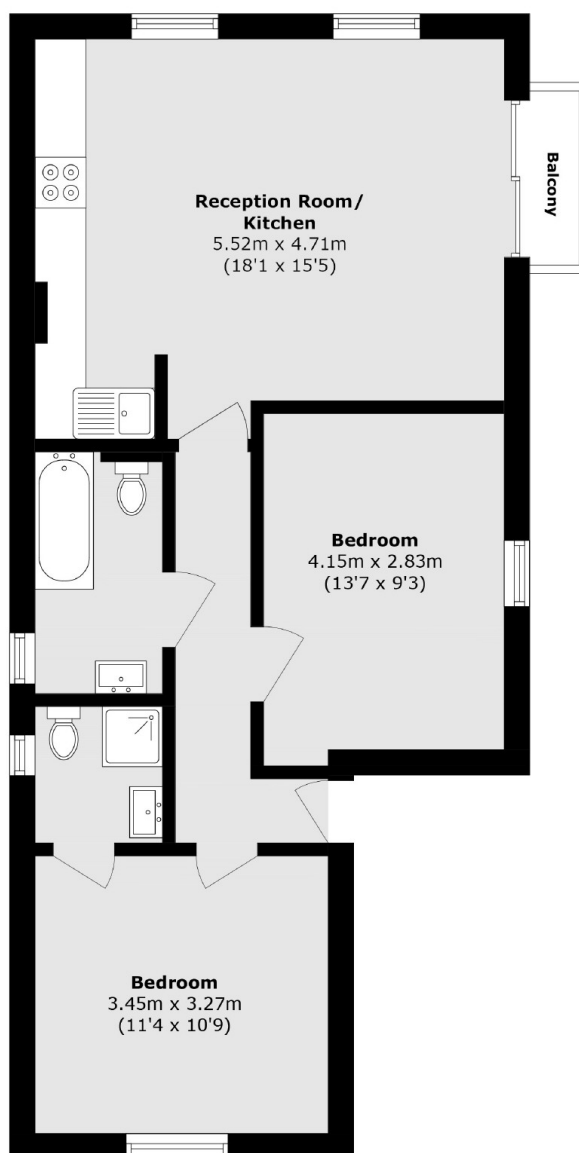
A bright, two double bedroom first floor apartment with Juliette balcony and views of The Thames. Accommodation is made up of an open plan, double aspect living space with wooden floors onto integrated kitchen. The principle bedroom has a en suite shower-room. There is a second double bedroom and further bathroom. Offered with no onward chain and resident's parking.

Little Cedars is located on the Portsmouth Road, overlooking the River Thames and near to local amenities. Surbiton high street and train station with its fast links to waterloo are within a mile and Thames Ditton is 0.3 miles away.

### Features

- First Floor Flat
- Two Double Bedrooms
- Two Bathrooms
- River Views
- No Chain
- Parking

# Portsmouth Road, Surbiton, KT6



Total area (approx.): 61.7 sq. m (664.1 sq. ft)

Balcony area (approx.): 1.2 sq. m (12.9 sq. ft)