



Kingsmead Avenue, KT6

£799,950

This beautifully renovated four bedroom semi detached house has been fully extended and refurbished to a high standard throughout. The property offers just under 1800 sq ft of living space including a modern open plan kitchen/dining room, reception room, four bedrooms, a study and four bathrooms. The property further benefits from a stylish landscaped garden, annex with ensuite shower room, a garage and no onward chain.

Located in a highly sought-after area, with easy access to the A3, Tolworth train station and a selection of shops, bars and restaurants all within half a mile, Kingsmead Avenue is a great location. There are also some highly regarded local schools, including several with Outstanding' Ofsted ratings. Surbiton town centre is just over a mile away.

Features

Beautifully Renovated
Four Double Bedrooms
Study and Annex
Five Bathrooms
No Onward Chain
Garage and Off Street Parking



Kingsmead Avenue, KT6

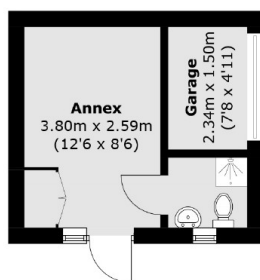
The ground floor has a welcoming hallway with porch, a bay-fronted reception room, a stylish modern open plan kitchen with a spacious dining area and a shower room with w/c.

The first and second floor comprise four well proportioned bedrooms, three stylish and modern bathrooms and a study.

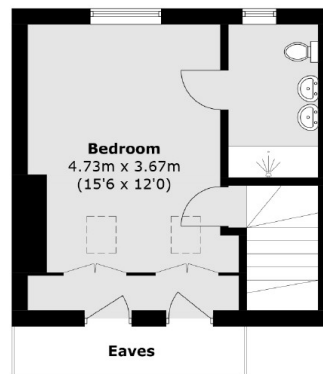
Externally there is a beautiful landscaped garden, gated blocked-paved driveway with a fast EV charger, a garage with electric door leading to a utility storage room and a brick built annex with its own ensuite bathroom, ideal from working from home .



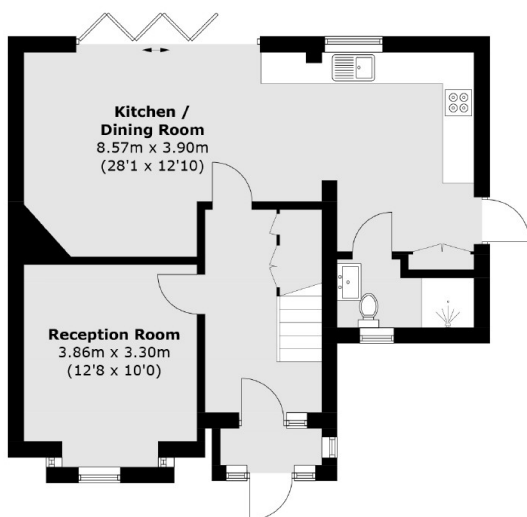
Kingsmead Avenue, Surbiton, KT6



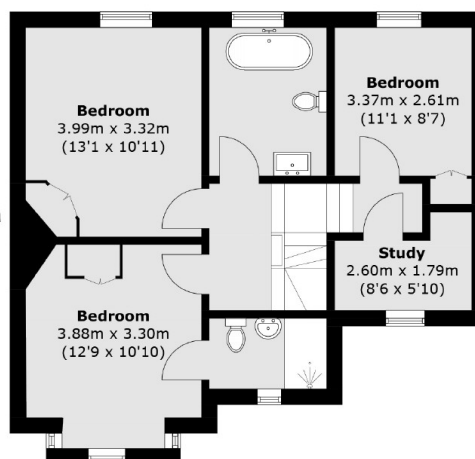
Ground Floor



Second Floor



Ground Floor



First Floor

Total area (approx.): 147.3 sq. m (1,585.4 sq. ft)
Garage: 3.5 sq. m (37.7 sq. ft)
Annex: 12.3 sq. m (132.4 sq. ft)
(Excluding Eaves)