



Ellerton Road, KT6

£750,000

Dexters



Ellerton Road, KT6

Charming Detached Victorian Home in the Heart of Surbiton. This beautifully presented detached Victorian house offers a perfect blend of period character and modern living. Situated in a sought-after location in Surbiton, the property boasts three well-proportioned bedrooms, two contemporary bathrooms, and three versatile reception rooms ideal for both family life and entertaining.

Enjoy the benefits of a bright and spacious layout, complemented by a delightful south-facing garden, perfect for outdoor dining and relaxation. Additional highlights include a dedicated home office and off-street parking.

A rare opportunity to own a character-filled home with all the modern conveniences, just moments from local amenities and excellent transport links.

Ellerton Road is a peaceful residential road, approximately a mile away from both Surbiton and Tolworth town centres and train stations, with their quick links to London. Some of the areas best schools are also on the doorstep.

Features

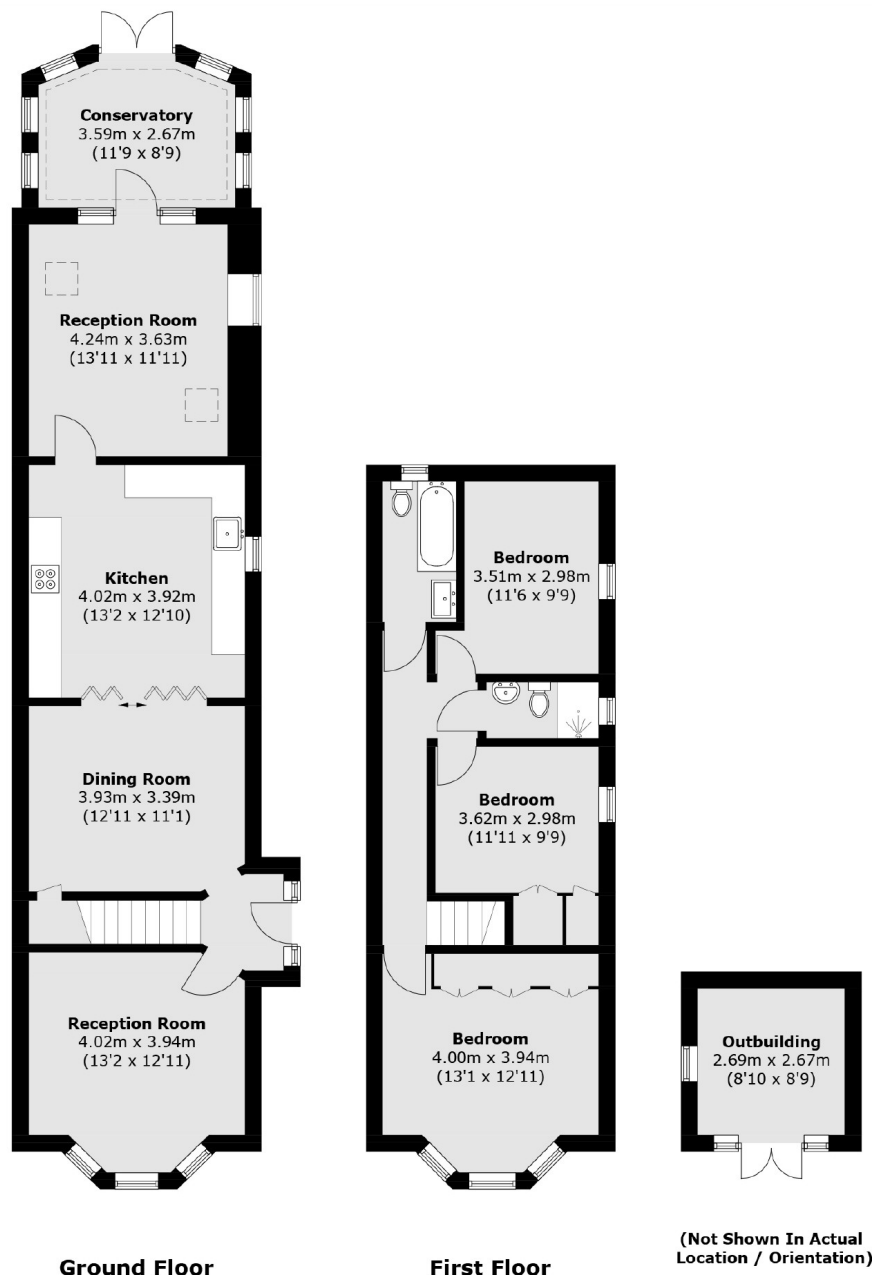
- Detached
- Victorian House
- Two Bathrooms
- Home Office
- Great Location
- Close To Good Schools







Ellerton Road, Surbiton, KT6



Total area (approx.): 125.3 sq. m (1,348.7 sq. ft)
Outbuilding : 7.4 sq. m (79.6 sq. ft)

Dexters

Surbiton
4 Claremont Road
Surbiton
KT6 4QU
Sales
020 8390 3939

Energy Rating: D. We aim to make our particulars both accurate and reliable. However they are not guaranteed; nor do they form part of an offer or contract. If you require clarification on any points then please contact us, especially if you're traveling some distance to view. Please note that appliances and heating systems have not been tested and therefore no warranties can be given as to their good working order.

RICS Regulated
Estate Agent
and Letting Agent

dexters.co.uk