



Savery Drive, KT6

£1,295,000

Dexters



Savery Drive, KT6

Charming Four-Bedroom Detached Home in a Private Development. Set within a beautiful and secure private development, this detached four-bedroom, three-bathroom home offers a rare combination of privacy, character, and convenience.

Nestled among meticulously maintained communal grounds, the property enjoys a peaceful setting with off-street parking and a pretty country-style garden, perfect for relaxing or entertaining.

Inside, the house blends traditional charm with modern living, featuring generous living spaces, and a thoughtful layout across two floors. All four bedrooms are well-proportioned, including a spacious principal suite, as well as an ensuite in the second bedroom and the three bathrooms are stylishly appointed. There is also a spacious cloakroom downstairs, perfect for storage.

This exclusive development provides a strong sense of community, with the added security of electric gates and the benefit of landscaped shared gardens.

Savery Drive is a sought after, centrally located road next to Victoria Park. This peaceful and popular road has everything you need within half a mile, including the River Thames, the desirable Maple Road, Surbiton high street and mainline train with its fast links into Waterloo.

Features

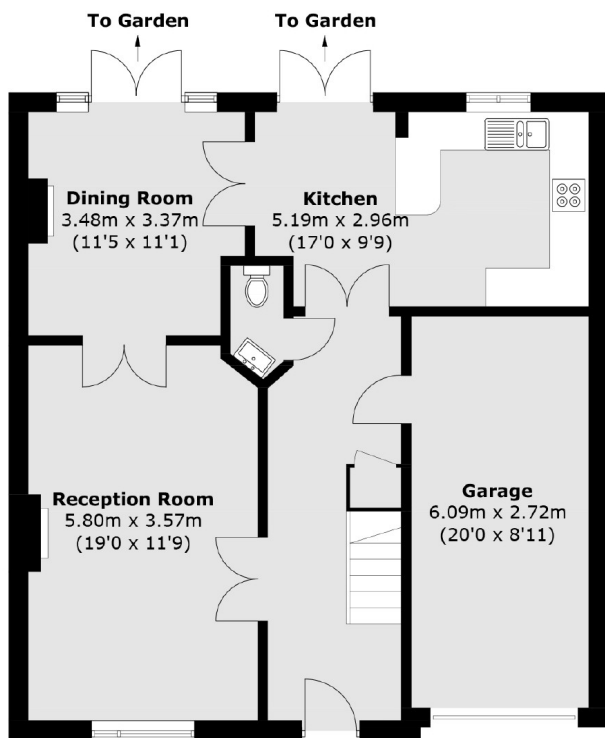
- Detached
- Four Bedrooms
- Three Bathrooms
- Off Street Parking
- Private Development
- Central location



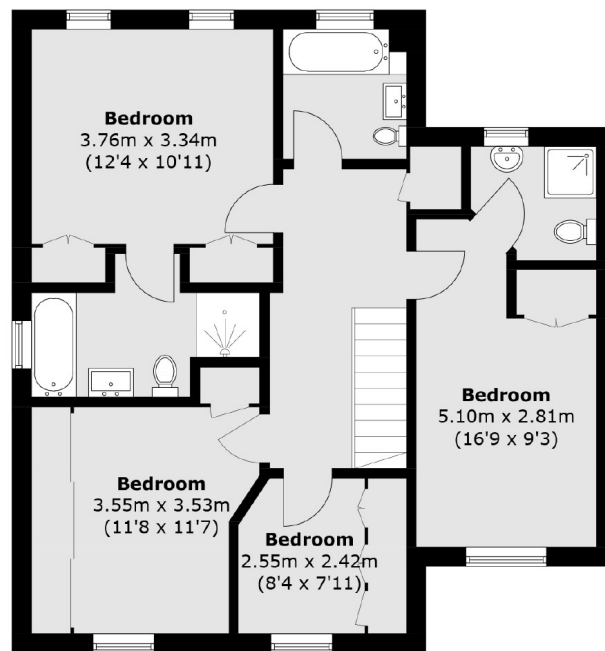




Savery Drive, Surbiton, KT6



Ground Floor



First Floor

Total area (approx.): 155.7 sq. m (1,675.9 sq. ft)