



Mountcombe Close, KT6

£525,000

A large bright spacious first floor apartment with lots of privacy and woodland views, offered with a share of freehold. The property features two generously sized double bedrooms; a stylish modern family bathroom with underfloor heating & micro-cement walls; an additional separate WC ; a showpiece kitchen with breakfast bar; a stunning light filled reception & dining room that opens onto a private balcony.

Mountcombe Close is a peaceful cul-de-sac approx. 0.3 miles from Surbiton station with fast trains to Waterloo (17 minutes) and a vast selection of pubs, restaurants and local shops in the High Street. It's within 15 minutes' walk to the Thames riverside.

Features

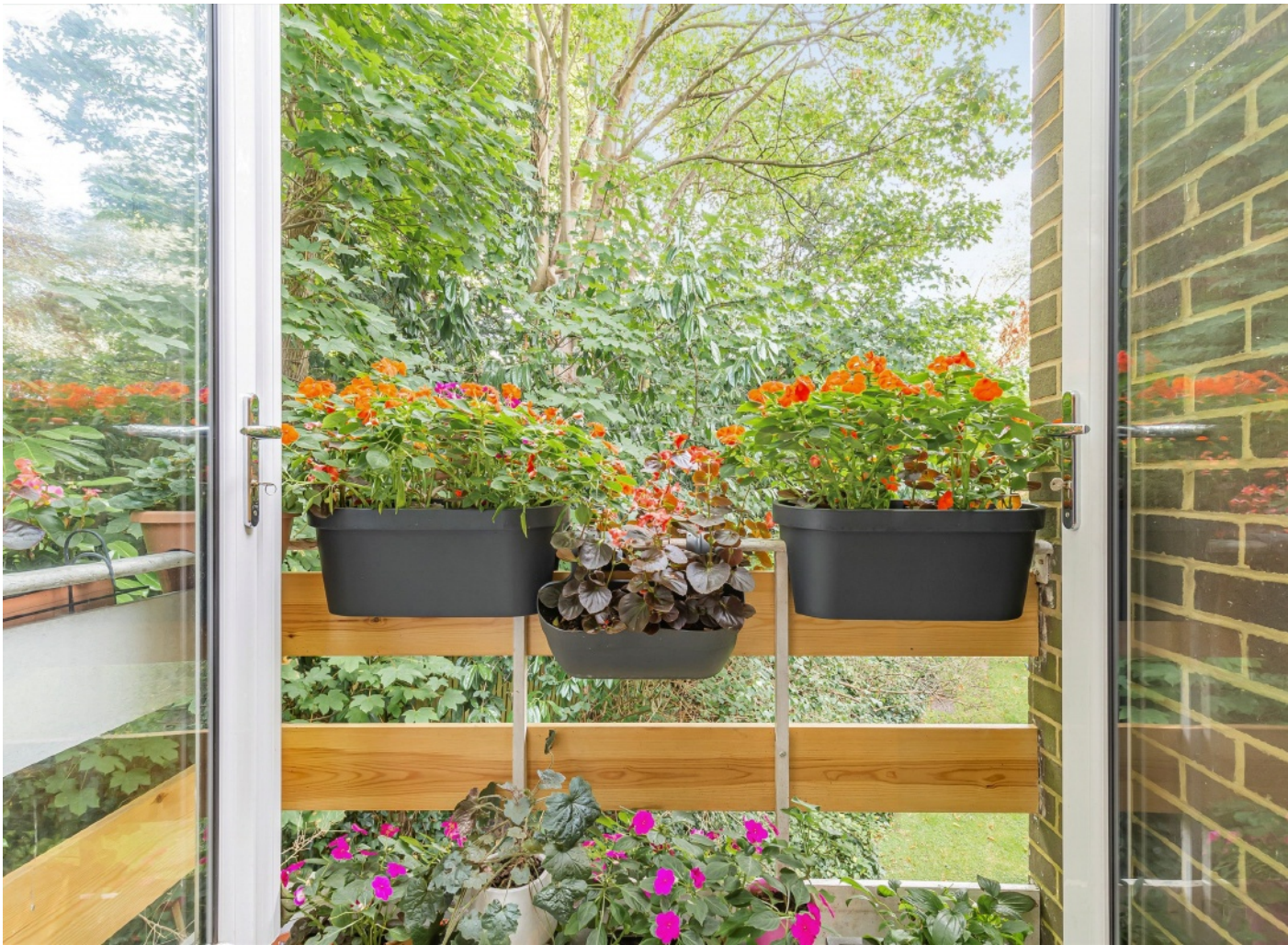
- First Floor
- Private Balcony
- Communal Garden
- Off-Street Parking
- Garage
- Share Of Freehold



Mountcombe Close, KT6

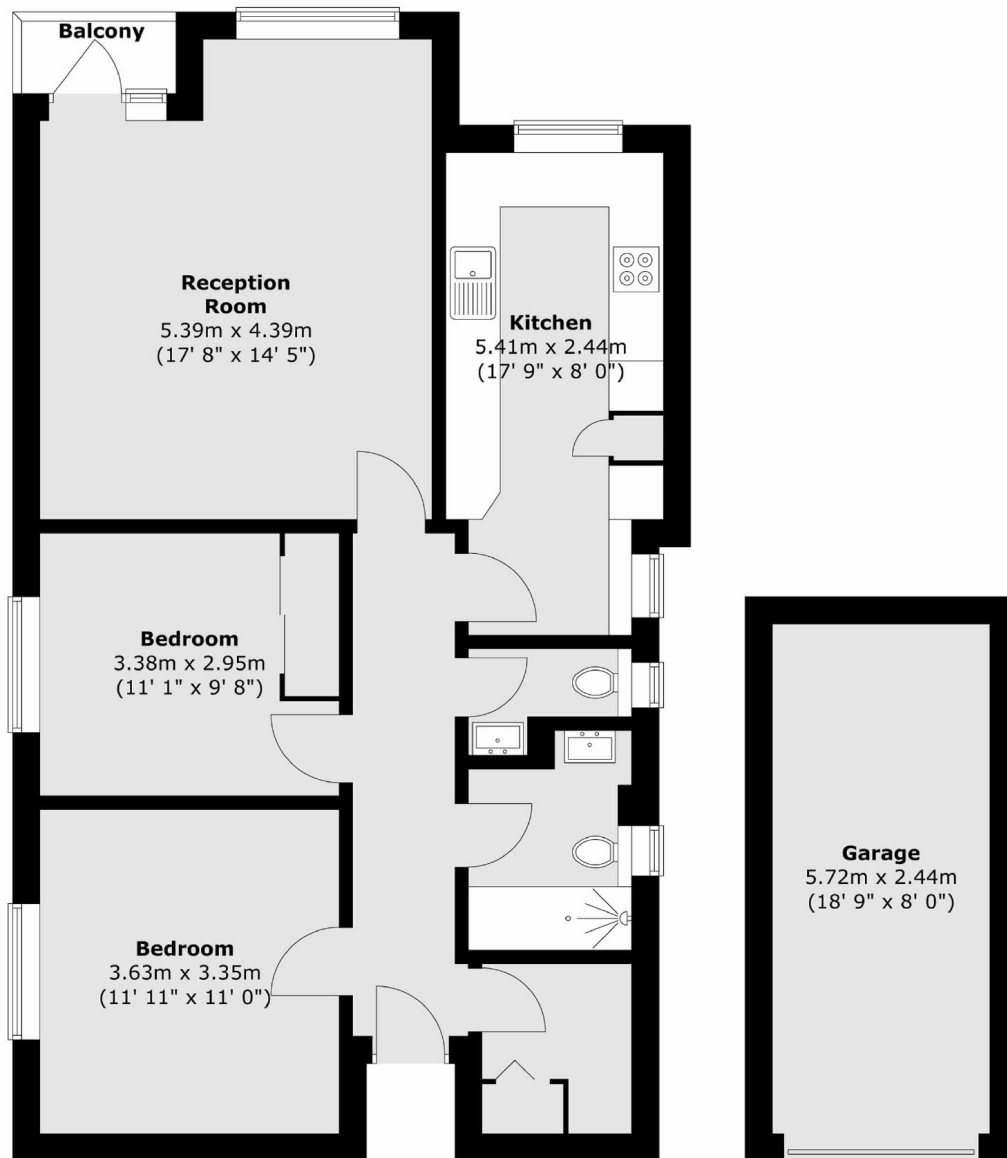
Additional benefits include; wooden Burmese teak floors, a south facing reception room, a storeroom, new unvented hot water boiler and the property has no common walls with other flats and no other flat above it.

Externally there are beautifully maintained communal gardens renowned for their vibrant colours and charm as well as private garage.



Mountcombe Close, Surbiton, KT6

First Floor



Total area (approx.) : 76.8 sq. m (827 sq. ft)
Total garage area (approx.) : 13.9 sq. m (150 sq. ft)
Total balcony area (approx.) : 1.9 sq. m (20 sq. ft)

Dexters

Surbiton
4 Claremont Road
Surbiton
KT6 4QU
Sales
020 8390 3939

Energy Rating: E. We aim to make our particulars both accurate and reliable. However they are not guaranteed; nor do they form part of an offer or contract. If you require clarification on any points then please contact us, especially if you're traveling some distance to view. Please note that appliances and heating systems have not been tested and therefore no warranties can be given as to their good working order.

 **RICS** | Regulated
Estate Agent
and Letting Agent

[dexters.co.uk](https://www.dexters.co.uk)