



Lower Marsh Lane, KT1

£650,000

This well-presented three-bedroom home is ideally located within easy reach of Surbiton town centre. The ground floor offers two generous reception rooms, a kitchen, and a family bathroom, with direct access to a spacious rear garden perfect for entertaining or relaxing outdoors.

With both Surbiton and Berrylands train stations, the River Thames and Kingston town centre all within a mile, Lower Marsh Lane is situated in a fantastic location.

Features

- End Of Terrace
- Three Bedrooms
- Off Street Parking
- Great Location
- Potential To Extend (STPP)
- No Onward Chain

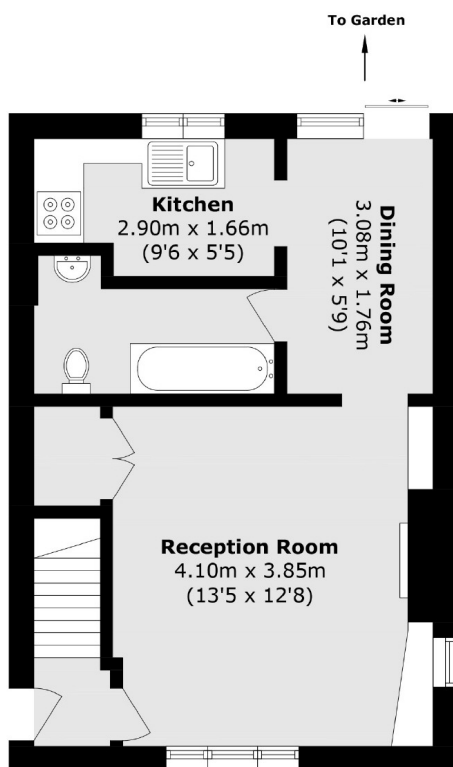


Lower Marsh Lane, KT1

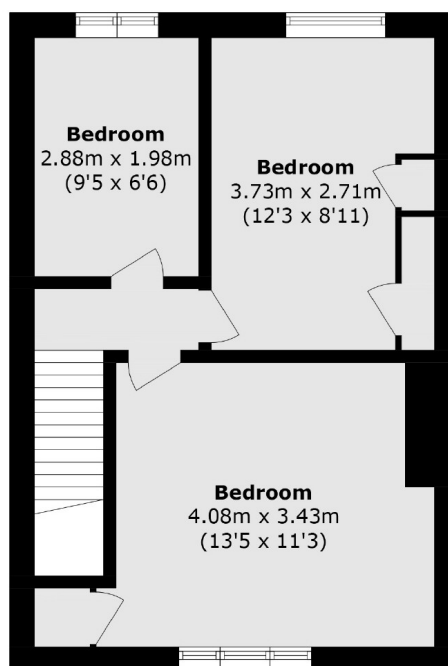
Upstairs, you'll find three well-proportioned bedrooms. The property also benefits from off-street parking at the front and offers excellent potential to extend (subject to planning permission), making it a fantastic opportunity for families and investors alike.



Lower Marsh Lane, Kingston Upon Thames, KT1



Ground Floor



First Floor

Total area (approx.): 70.6 sq. m (759.9 sq. ft)