



Lower Marsh Lane, KT1

£675,000

This beautifully maintained 3-bedroom terraced home offers comfortable and stylish living in a sought-after residential area. Boasting a welcoming layout, the property features a spacious lounge, a modern kitchen, and double bedrooms.

With both Surbiton and Berrylands train stations, the River Thames and Kingston town centre all within a mile, Lower Marsh Lane is situated in a fantastic location.

Features

- Three Double Bedrooms
- Well Presented
- Front and Rear Garden
- No Onward Chain
- Scope To Extend (STTP)
- Permit Parking



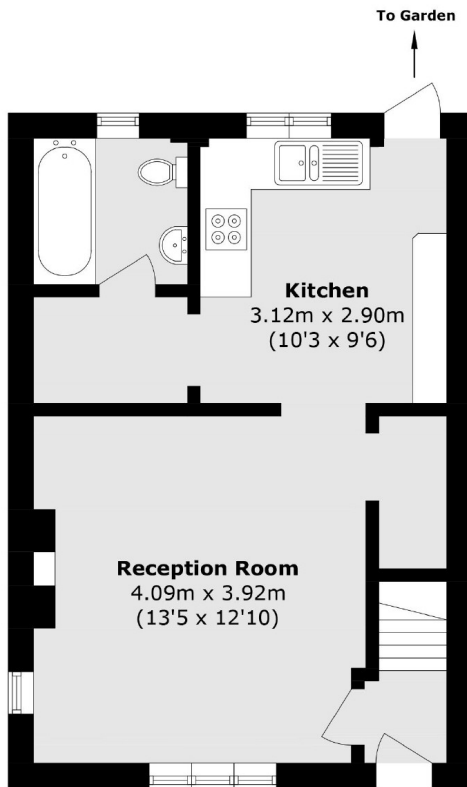
Lower Marsh Lane, KT1

Upon entering, you are welcomed into a bright and inviting living space, ideal for relaxing or entertaining guests. The modern kitchen is well-appointed and provides ample storage and workspace, with direct access to the rear garden. Upstairs, you'll find three generously sized bedrooms, all filled with natural light.

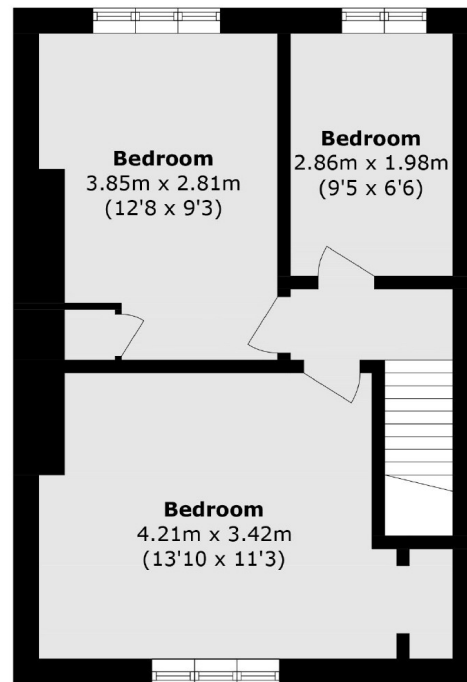
The property further benefits from a private South facing garden and scope to extend (STTP).



Lower Marsh Lane, Kingston Upon Thames, KT1



Ground Floor



First Floor

Total area (approx.): 71.6 sq. m (770.7 sq. ft)