



Douglas Road, KT6

£925,000

Dexters



Douglas Road, KT6

This elegant detached Victorian residence blends timeless character with contemporary living, offering beautifully proportioned interiors and a wealth of period charm.

Set on a quiet residential street, this exceptional home features a stunning bay-fronted reception room, a spacious open-plan kitchen, dining, and family area with a striking glass-roofed side return, and seamless sliding doors that open onto a beautifully landscaped private garden.

The ground floor also includes a stylish guest cloakroom, a separate utility room, and refined living spaces designed for both comfort and entertaining.

Upstairs, you'll find three good sized bedrooms and a sleek, modern family bathroom. Outside, the expansive rear garden offers a tranquil retreat with a patio area ideal for al fresco dining and a well-maintained lawn. To the front, the property benefits from off-street parking on a private driveway.

Perfectly positioned on the sought-after Douglas Road, this home enjoys excellent connectivity within easy reach of the A3 and just under a mile from both Surbiton and Tolworth mainline stations, offering fast and frequent services into Central London.

Features

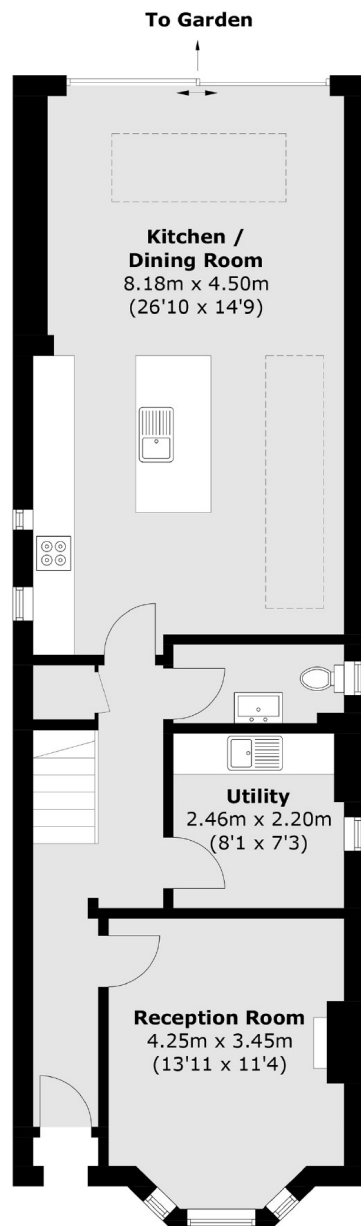
- Victorian House
- Detached Property
- Beautiful Rear Extension
- Three Bedrooms
- Generous Garden
- Off Street Parking



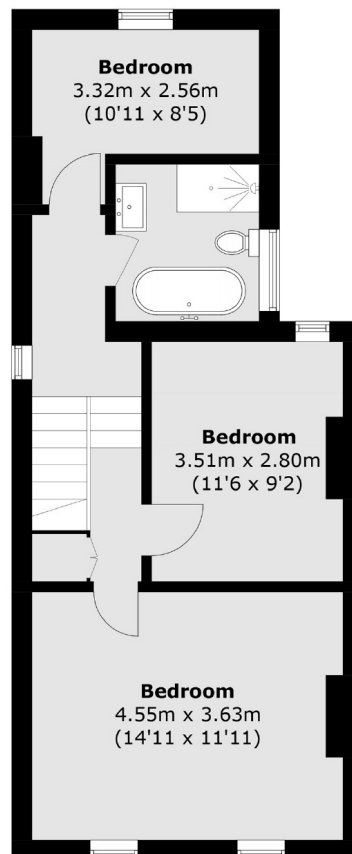




Douglas Road, Surbiton, KT6



Ground Floor



First Floor

Total area (approx.): 119.9 sq. m (1,290.5 sq. ft)