



Beresford Avenue, KT5

£1,150,000

Dexters



Beresford Avenue, KT5

This four/five bedroom semi-detached property has been renovated to a high standard throughout and extended to the side, rear and loft creating the perfect family home. It is offered to the market with a landscaped garden, off street parking and no onward chain.

The ground floor has a substantial rear extension with a brand new open plan kitchen/dining/reception room with large sliding doors on to the garden, a utility room and downstairs bathroom. There is also a bay fronted second reception room/fifth bedroom.

On the first floor, there are three bedrooms and a family bathroom. The main bedroom is on the second floor, along with an en suite shower room and access to the eaves for storage.

Outside, there is a beautiful landscaped rear garden with a space to build a studio/office or shed and to the front, there is a driveway and a front garden.

Beresford Avenue is a peaceful residential road with easy access to the A3 and approximately half a mile away from Tolworth train station, with its quick links to London Waterloo. There are also an array of fantastic nurseries and primary and secondary schools on its doorstep.

Features

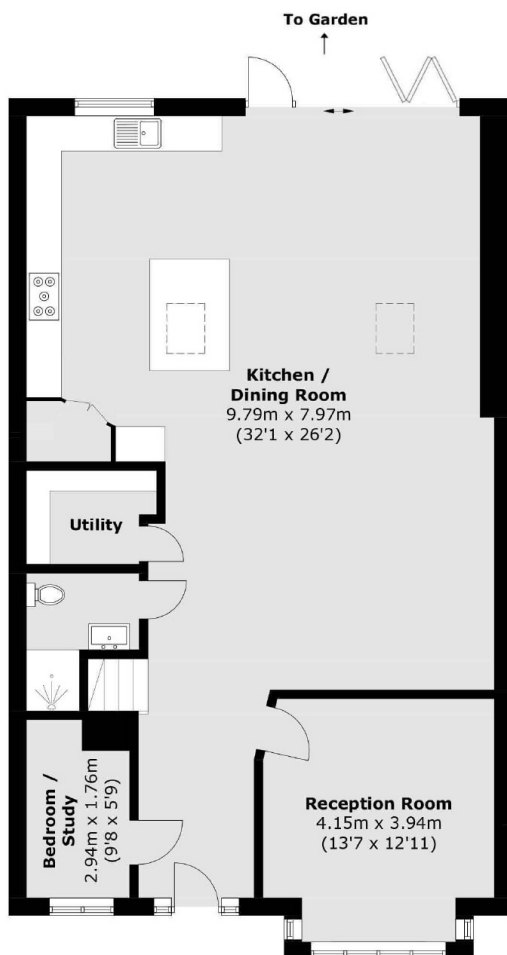
- Beautifully Renovated
- Large Open Plan Kitchen
- Four/Five Bedrooms
- Three Bathrooms
- Off-Street Parking
- No Onward Chain



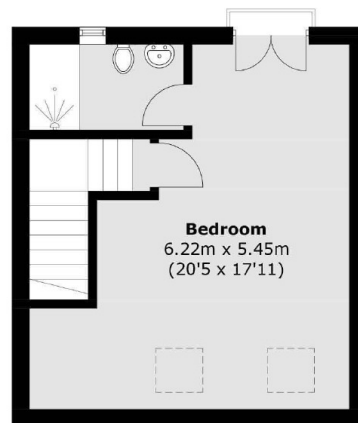




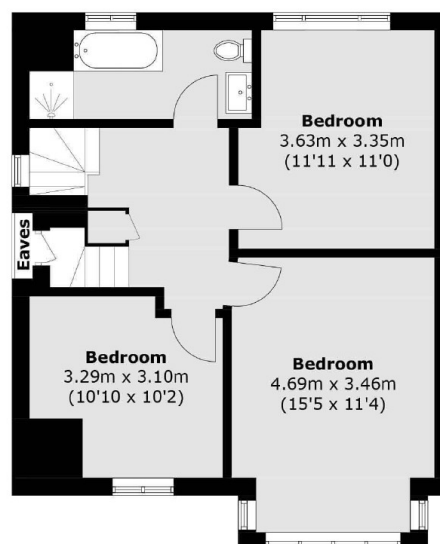
Beresford Avenue, Surbiton, KT5



Ground Floor



Second Floor



First Floor

Total area (approx.): 196.4 sq. m (2,114.0 sq. ft)
(Excluding Eaves)