



Indigo Square, KT6

£689,950

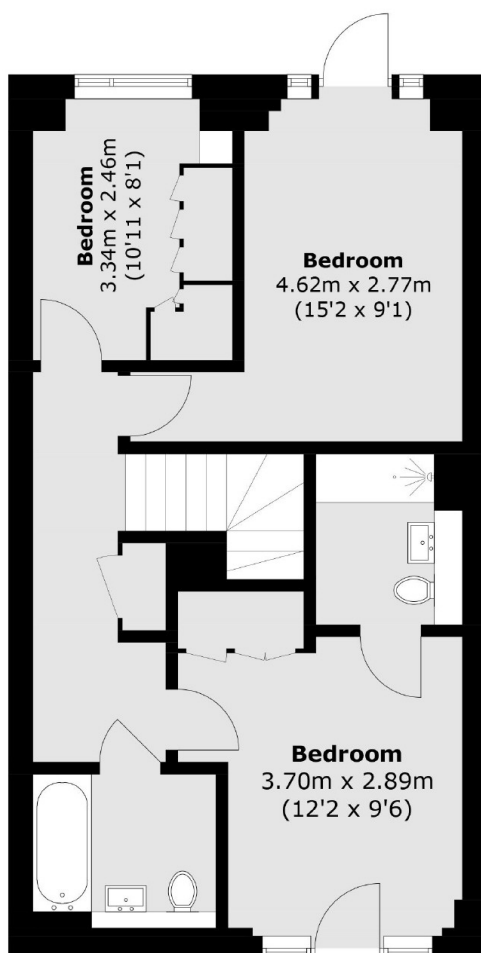
A stunning split-level luxury apartment, perfectly positioned away from the hustle and bustle of the main road. This spacious ground-floor apartment boasts a generous wrap-around reception room, three peaceful bedrooms, and two modern bathrooms. Additional features include a private garden and secure underground parking, providing both comfort and convenience. Ideally located in the heart of Surbiton, this apartment offers the perfect blend of tranquility and accessibility.

Indigo Square development is in central Surbiton, moments from the idyllic River Thames and 7 minutes walk to Surbiton train station, with fast access to London Waterloo. The development also features a nursery and a communal garden / playground, perfect for those with families or looking to settle down.

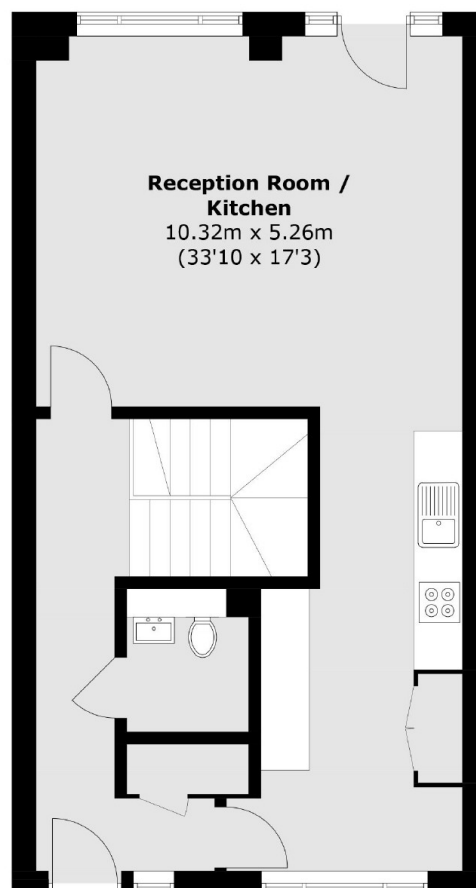
Features

- Two Reception Rooms
- Three Bedrooms
- Private Garden
- Underground Parking
- Central Location
- No Chain

Indigo Square, Surbiton, KT6



Lower Ground Floor



Ground Floor

Total area (approx.): 109.6 sq. m (1,179.6 sq. ft)