



Thorkhill Road, KT7

£1,650,000

Dexters



Thorkhill Road, KT7

An impressive and imposing detached, Edwardian home of nearly 2500 sq ft with a large rear garden, off-street parking, four/five bedrooms, three bathrooms, three reception rooms and a garage.

On the ground floor, there is a large welcoming entrance hall, an open plan fully fitted kitchen/breakfast room with doors leading to the garden, a living room, a further reception room with access to the garden, a study/bedroom, a cloakroom, a utility room and a garage.

On the first floor, there are three large double bedrooms, a spacious en-suite bathroom with two wash basins and a further family bathroom. On the second floor, there is another large double bedroom with an en suite shower room and eaves storage.

Outside is a large, private, immaculately maintained, south facing rear garden with a decking area for outdoor entertaining. To the front of the property, there is off-street parking and access to the garage.

Thorkhill Road is in the desirable family-friendly area of Thames Ditton, approximately a mile away from Thames Ditton train station and Surbiton's popular high street. It is also in the catchment area for great local schools.

Features

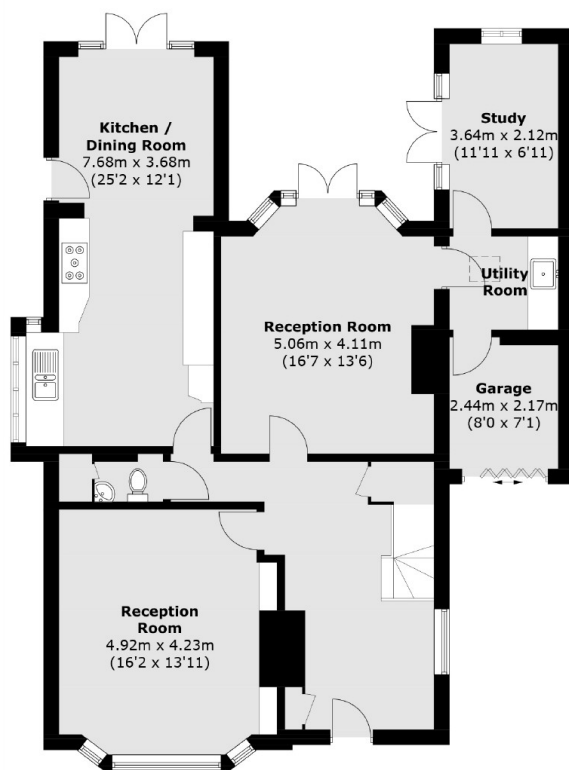
- Detached Home
- Three Reception Rooms
- Four/Five Bedrooms
- Three Bathrooms
- Large Private Garden
- Great Location



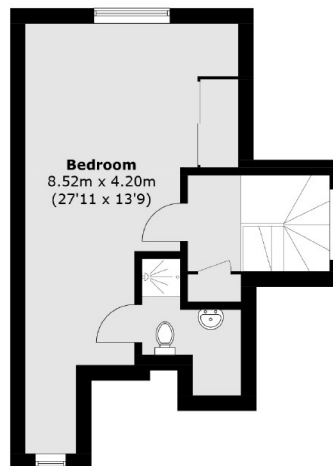




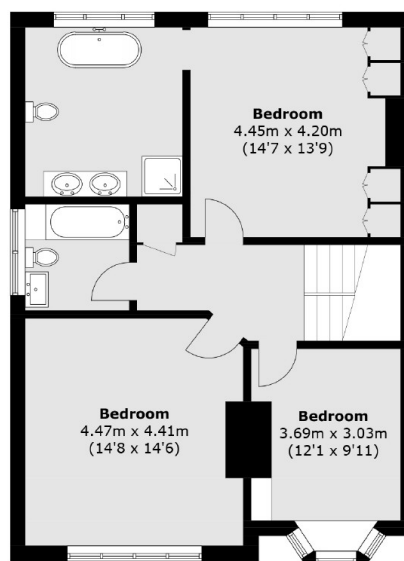
Thorkhill Road, Thames Ditton, KT7



Ground Floor



Second Floor



First Floor

Total area (approx.): 217.0 sq. m (2,335.8 sq. ft)