



Ditton Road, KT6

£1,999,950

Step into timeless elegance with this beautifully presented Edwardian property, offering an exceptional blend of period charm and modern living. The heart of the home is the stunning open-plan kitchen and dining area, thoughtfully designed for both everyday living and entertaining. With high ceilings, large stained glass windows, original features throughout, and boasting five spacious bedrooms and three stylish bathrooms, plus a further cloakroom, this property is perfect for families. There are also two characterful reception rooms and a home office.

Located in the prestigious Southborough Estate, Ditton Road is one of Surbiton's premier locations and is approximately a mile from Surbiton town centre with its fast trains into London. The road is peaceful yet close to everything you need including some of the areas most sought after schools.

Features

Edwardian Property
Five Double Bedrooms
Three Bathrooms
Stunning Mature Garden
Southborough Estate
No Onward Chain



Ditton Road, KT6

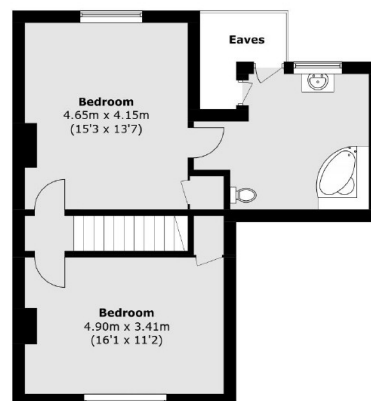
When entering this stunning property through the original wooden door you are immediately struck by Edwardian Charm. From a grand hallway the reception rooms are accessible. This includes the home office with original fireplace, two large reception rooms that can be made into one leading through to the kitchen/diner with original service bells. There is also a W.C.

The first floor is entered up an embracing staircase with huge stained glass windows directly in front of you before separating towards the family bathroom to one side, along with a convenient utility room, and up a few stairs in the other direction are three large double bedrooms, one of which has an en-suite. The second floor has another two double bedrooms and a further en-suite.

The garden patio is encapsulated by a beautiful Wisteria, creating a natural veranda, perfect for shade. There is a pond to the rear of the garden and a large greenhouse. In addition there is a separate garage to the side of the property



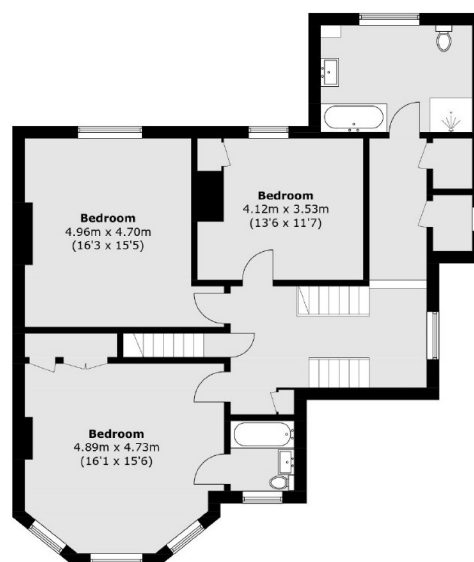
Ditton Road, Surbiton, KT6



Second Floor



Ground Floor



First Floor

Approx Internal Area: 259.4 sq. m (2,792.2 sq. ft)
Garage: 12.4 sq. m (133.5 sq. ft)
External Cupboard: 1.2 sq. m (12.9 sq. ft)
(Excluding Eaves)