



Guilford Avenue, KT5

£1,395,000

Dexters



Guilford Avenue, KT5

Set across three spacious floors and offering over 2,000 sq ft of beautifully arranged accommodation, this immaculate five-bedroom, three-bathroom Edwardian residence harmoniously blends period elegance with contemporary living.

Thoughtfully extended and meticulously maintained, the home features two generous reception rooms ideal for family life and entertaining, a stylish, light-filled kitchen designed for both functionality and flair, and a landscaped west-facing garden that enjoys plentiful afternoon and evening sun - perfect for relaxing or al fresco dining.

Presented in pristine condition, the property combines character, comfort, and convenience within one of the area's most sought-after neighbourhoods.

A truly exceptional home offering space, style and location - ready to welcome its next chapter.

Located on Guilford Avenue, just over half a mile from Surbiton town centre, residents enjoy fast train links to London Waterloo in just 17 minutes, a vibrant high street with pubs, shops, restaurants and a farmers market, and easy access to nearby Kingston town centre.

Features

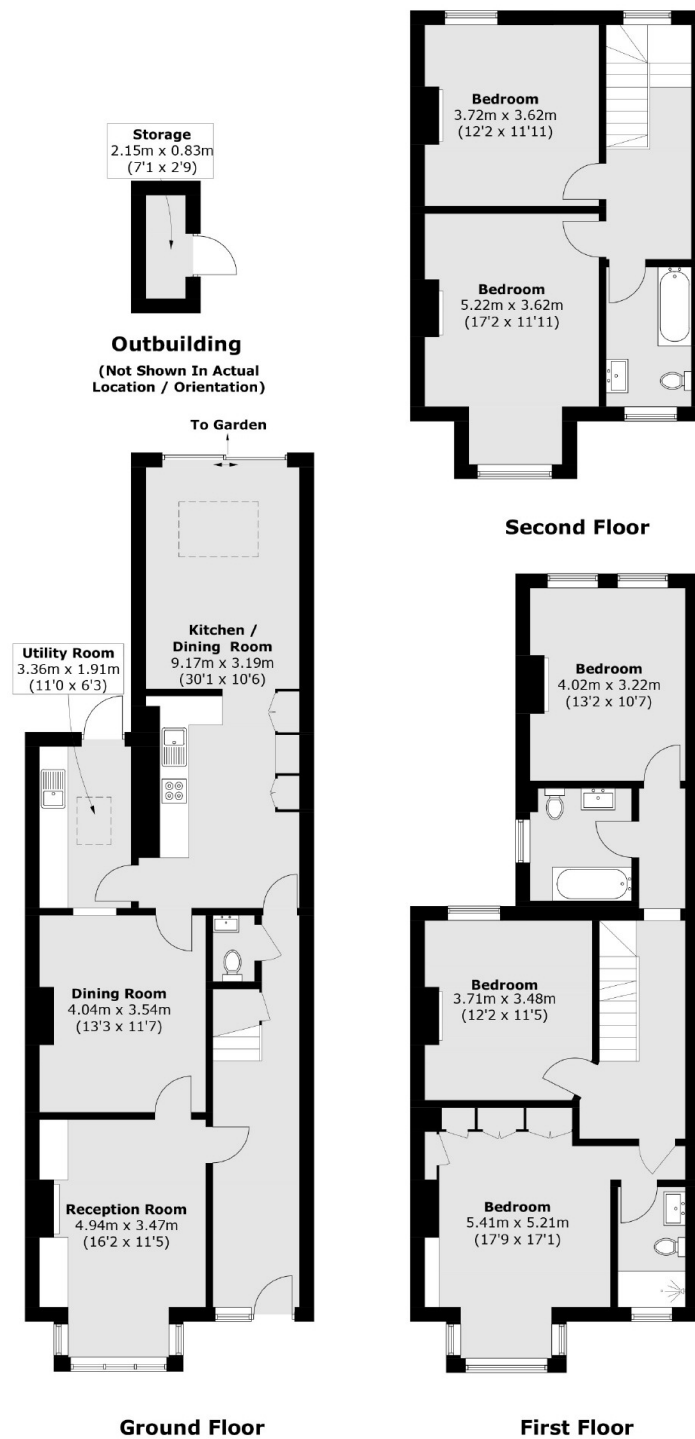
- Edwardian Home
- Five Bedrooms
- Three Bathrooms
- Immaculately Presented
- Over 2000SqFt
- Close To Surbiton/Kingston







Guilford Avenue, Surbiton, KT5



Total area (approx.): 198.4 sq. m (2,135.4 sq. ft)
External Storage : 1.9 sq. m (20.4 sq. ft)

Dexters

Surbiton
4 Claremont Road
Surbiton
KT6 4QU
Sales
020 8390 3939

Energy Rating: C. We aim to make our particulars both accurate and reliable. However they are not guaranteed; nor do they form part of an offer or contract. If you require clarification on any points then please contact us, especially if you're traveling some distance to view. Please note that appliances and heating systems have not been tested and therefore no warranties can be given as to their good working order.

RICS Regulated
Estate Agent
and Letting Agent

dexters.co.uk