



## Catherine Road, KT6

£6,495 Per calendar month

A wonderfully presented newly built four bedroom, four storey town house built in period style. The property offers extensive living space, with large living/dining room, three/four bedrooms, two living rooms and private parking.

Catherine Road is Located on one of Surbiton's premier river roads and within walking distance of Surbiton station and the High street.

### Features

- Built in Period Style
- Brand New Build
- River Road
- Ample Storage Throughout
- Tiled Floors
- Top Specification



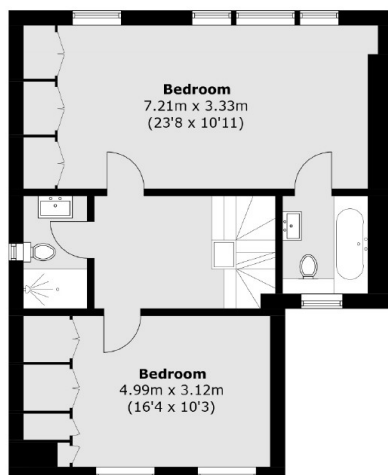


Catherine Road, KT6

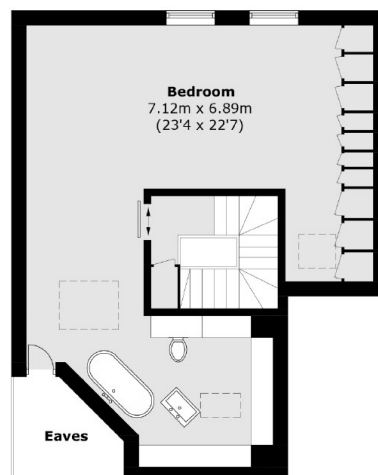




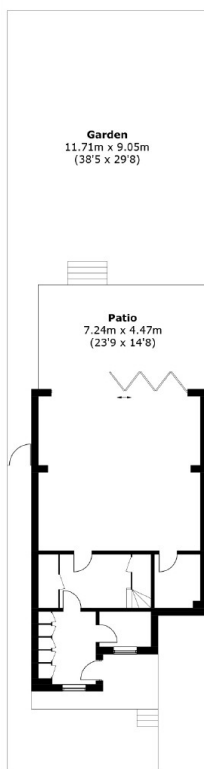
# Catherine Road, Surbiton, KT6



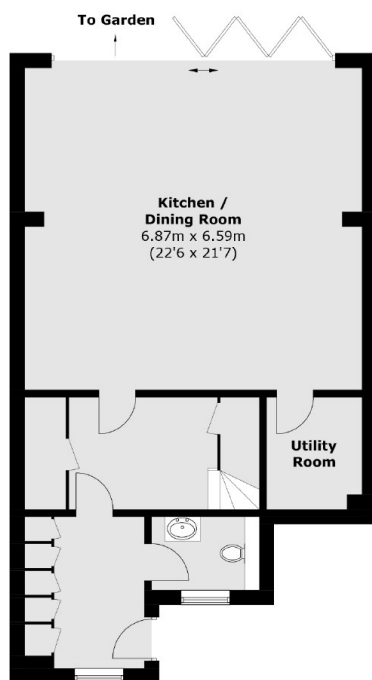
**First Floor**



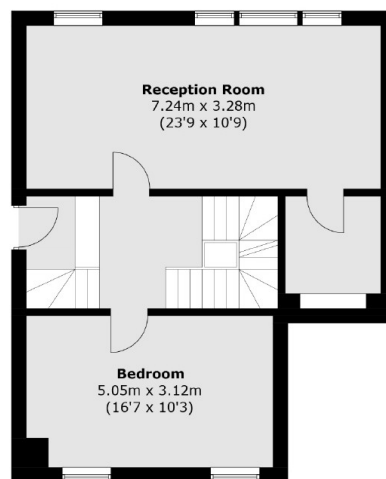
**Second Floor**



**Site Plan**



**Lower Ground Floor**



**Ground Floor**

Total area (approx.): 243.5 sq. m (2,621.0 sq. ft)  
(Excluding Eaves)