



Tolworth Rise North, KT5

£730,000

A modern five bedroom, two bathroom, ground floor extended 1930s house, offering over 1800sqft of accommodation, off street parking and a lovely secluded rear garden.

Nearby are plenty of shops and some great schools, including the: Richard Challoner School, Knollmead Primary School, The Holy Cross School, and Wesbury House School. Tolworth station 0.3miles away with links to Raynes Park, Clapham Junction & London Waterloo. There are plenty of bus services in the area with Tolworth offering the 418, 406, 281, K1 & K2.

Features

- Semi Detached
- Five Bedrooms
- Beautifully Presented
- Off Street Parking
- Rear Garden
- Potential To Extend (STPP)



Tolworth Rise North, KT5

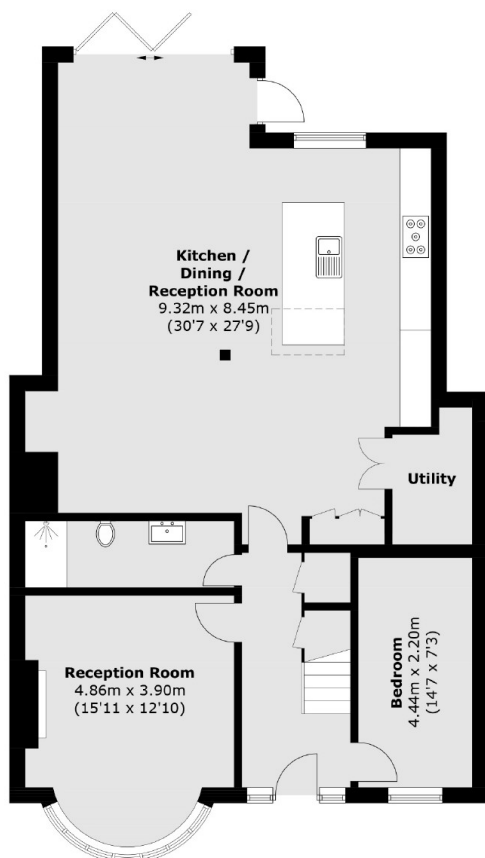
On the ground floor this property offers a double bedroom and a smart bathroom, there is a lovely bay fronted reception room with high ceilings, a utility space and a stunning rear extension providing a huge living/dining/kitchen with doors out to the rear garden. The kitchen is fully integrated and immaculate.

On the first floor there are four bedrooms and a bathroom with separate WC, all presented to the highest standard. The loft could be converted to provide another two bedrooms and a bathroom (STPP).

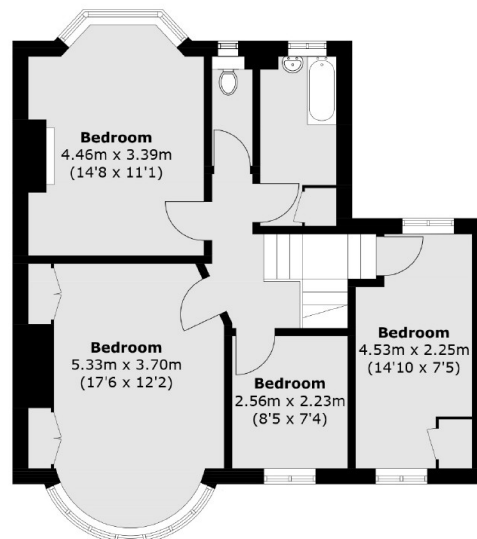
At the front there is a mature garden with off street parking and to the rear there is a lovely private garden.



Tolworth Rise North, Surbiton, KT5



Ground Floor



First Floor

Total area (approx.): 170.5 sq. m (1,835.4 sq. ft)