



Portsmouth Road, KT6

£2,250 Per calendar month

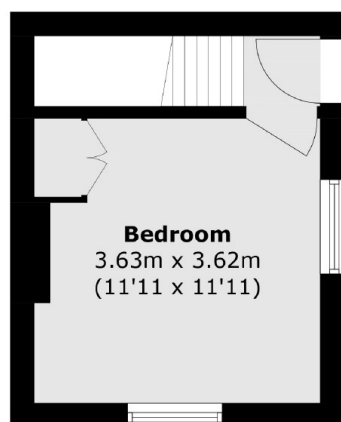
Finished to an excellent standard throughout, this two double bedroom split level apartment has access to the rear garden and also comes with an allocated parking space.

Portsmouth Road runs along the River Thames and allows easy access to Surbiton high street and the mainline train station, with fast train to Waterloo.

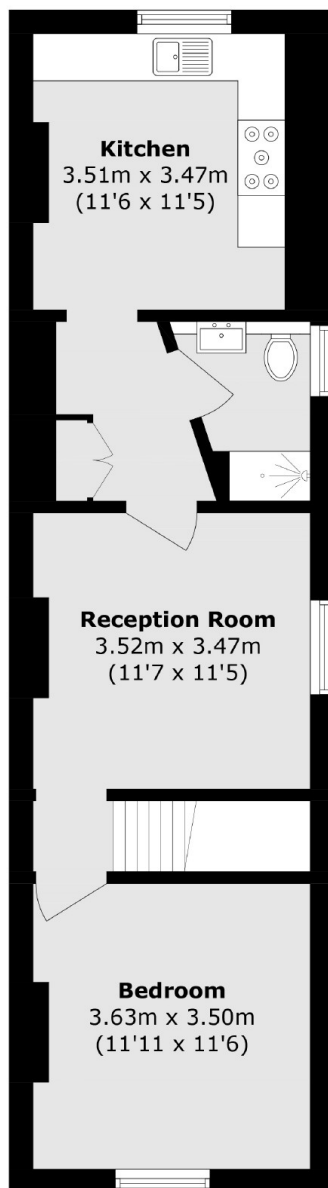
Features

- Split Level
- Garden
- Two Double Bedrooms
- Allocated Parking
- Separate Kitchen
- Close to Transport

Portsmouth Road, Surbiton, KT6



Ground Floor



First Floor

Total area (approx.): 64.8 sq. m (697.5 sq. ft)