



Surbiton Hill Park, KT5

£315,000

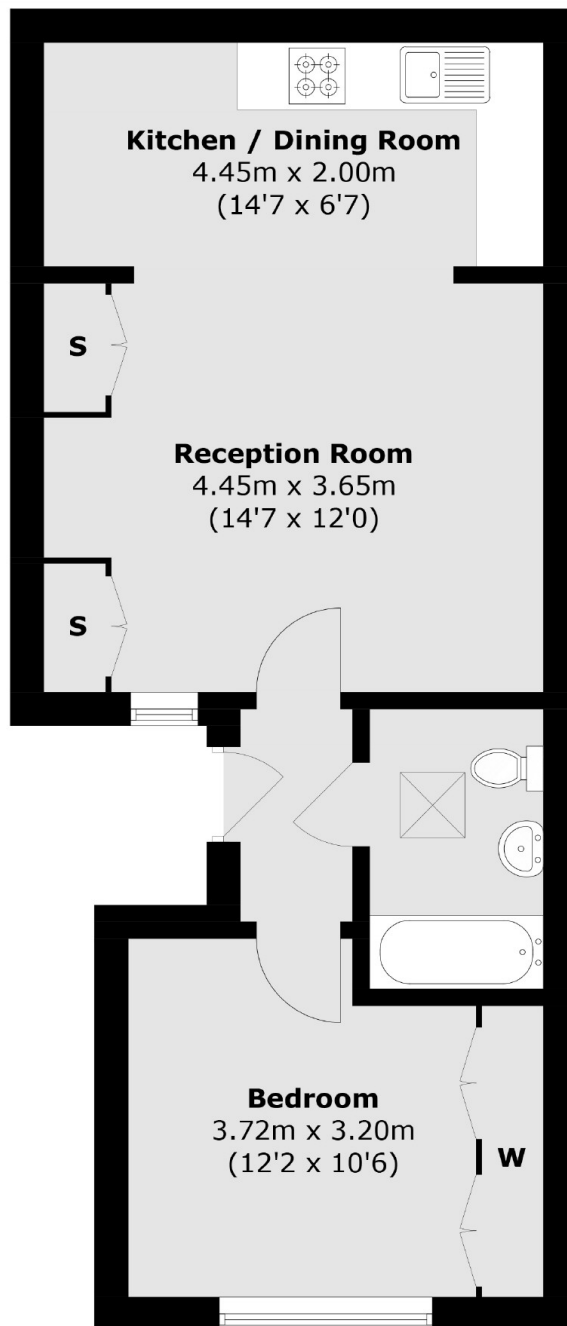
A pretty ground floor apartment, situated within this converted Victorian Villa. This lovely property has a bright double bedroom, an open plan kitchen/living area, a smart bathroom and access to both private and communal gardens. The apartment also comes with a share of the freehold and is being sold with no onward chain.

Surbiton Hill Park is just over half a mile away from Surbiton train station with the fast links to London Waterloo in 17 mins and the town centre with its farmers market, restaurants, pubs and shops.

Features

- Ground Floor
- One Double Bedroom
- Private & Communal Garden
- Off-Street Parking
- Share Of Freehold
- No Onward Chain

Surbiton Hill Park, Surbiton, KT5



Ground Floor

Total area (approx.): 43.7 sq. m (470.4 sq. ft)

Dexters

Surbiton
2 Claremont Road
Surbiton
KT6 4QU
Sales
020 8390 3939

Energy Rating: C. We aim to make our particulars both accurate and reliable. However they are not guaranteed; nor do they form part of an offer or contract. If you require clarification on any points then please contact us, especially if you're traveling some distance to view. Please note that appliances and heating systems have not been tested and therefore no warranties can be given as to their good working order.

 **RICS** | Regulated
Estate Agent
and Letting Agent

[dexters.co.uk](https://www.dexters.co.uk)