



Ditton Lawn, KT7

£2,150 Per calendar month

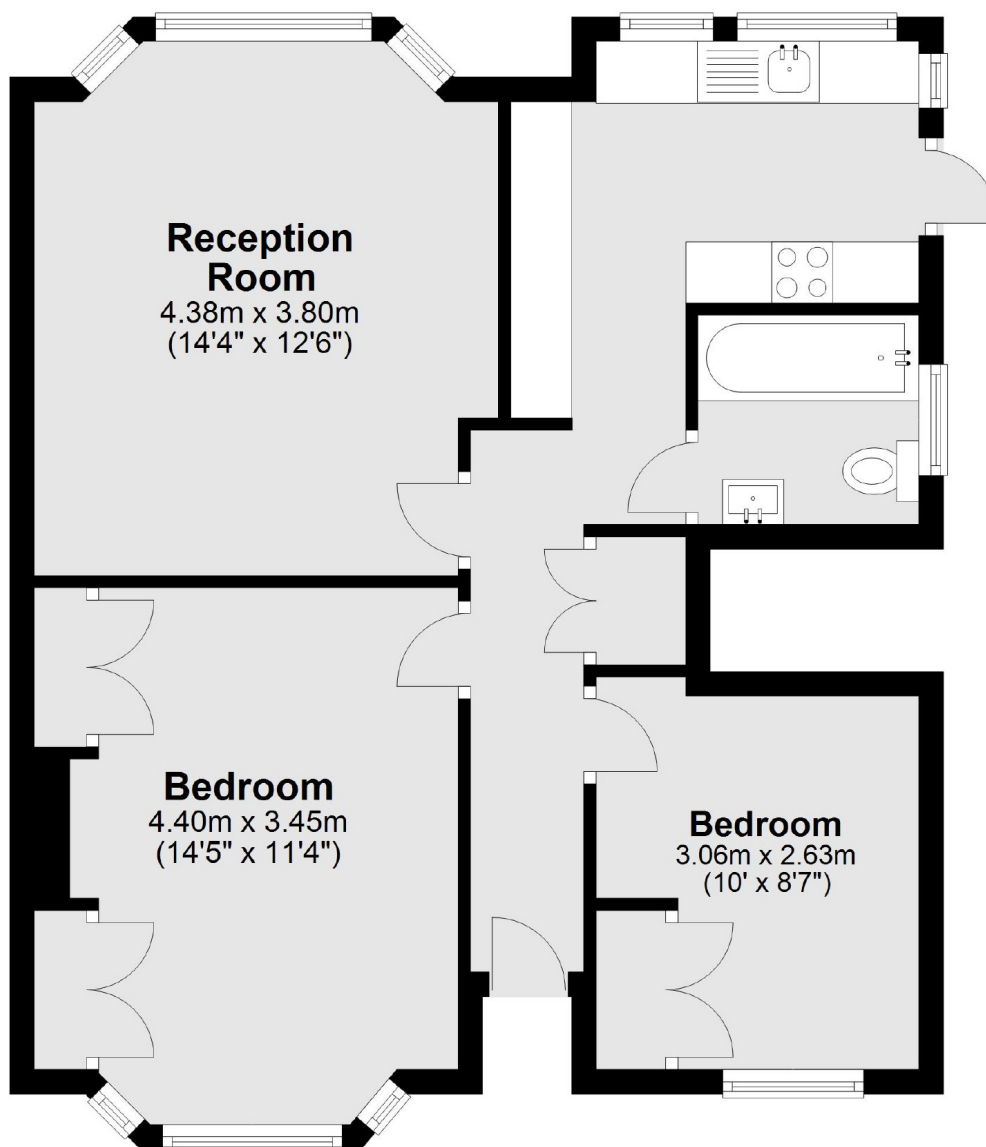
A stunning ground floor maisonette finished to a high standard throughout offering two double bedrooms, modern bathroom and kitchen and reception room. The property is approximately half a mile away from Thames Ditton train station and just over a mile from Surbiton High Street and the fast train to Waterloo.

Features

- Two Bedrooms
- Modern Kitchen
- One Bathroom
- On Street Parking
- Communal gardens
- Desirable Location

Ditton Lawn,
Thames Ditton, KT7

Ground Floor



Total area: approx. 57.5 sq. metres (618.9 sq. feet)