



Brighton Road, KT6

£599,950

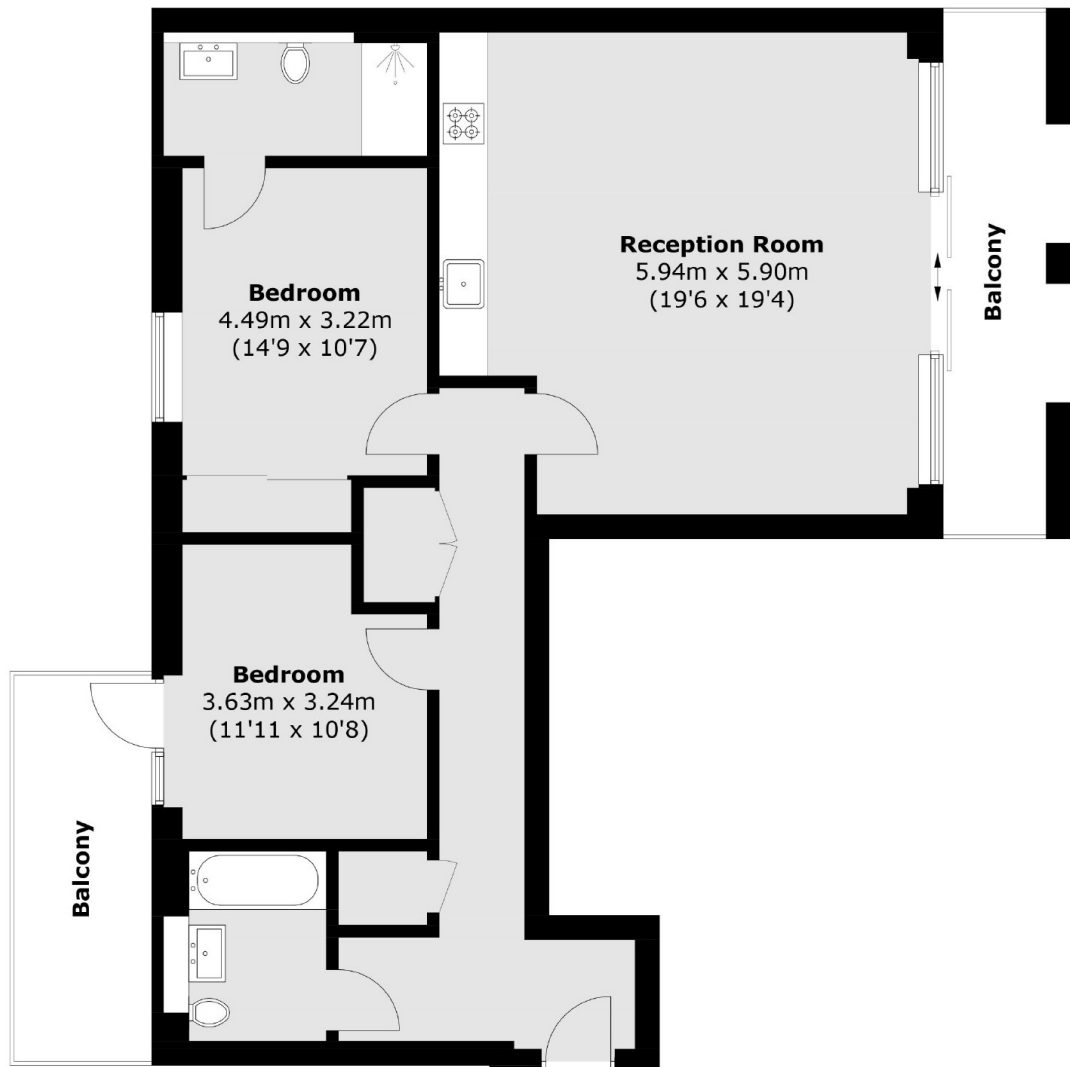
A pristine, modern apartment situated in a central location. This apartment offers an open plan kitchen/reception room with direct access to one of the balconies, two double bedrooms, two modern bathrooms and another private balcony.

Located in the heart of Surbiton with the River Thames, the trendy Maple Road and Surbiton high street on your door step. Surbiton station with its fast links into London Waterloo is within half a mile and Kingston town centre is located within a mile.

Features

- Immaculately Presented
- Open Plan Living
- Two Double Bedrooms
- Private Balconies
- Close to River
- Central Location

Brighton Road, Surbiton, KT6



Total area (approx.): 86.3 sq. m (928.9 sq. ft)
Balcony : 17.2 sq. m (185.1 sq. ft)

Dexters

Surbiton
2 Claremont Road
Surbiton
KT6 4QU
Sales
020 8390 3939

Energy Rating: B. We aim to make our particulars both accurate and reliable. However they are not guaranteed; nor do they form part of an offer or contract. If you require clarification on any points then please contact us, especially if you're traveling some distance to view. Please note that appliances and heating systems have not been tested and therefore no warranties can be given as to their good working order.

 **RICS** | Regulated
Estate Agent
and Letting Agent

[dexters.co.uk](https://www.dexters.co.uk)