



Ebbisham Lane, KT20

£7,995 Per calendar month

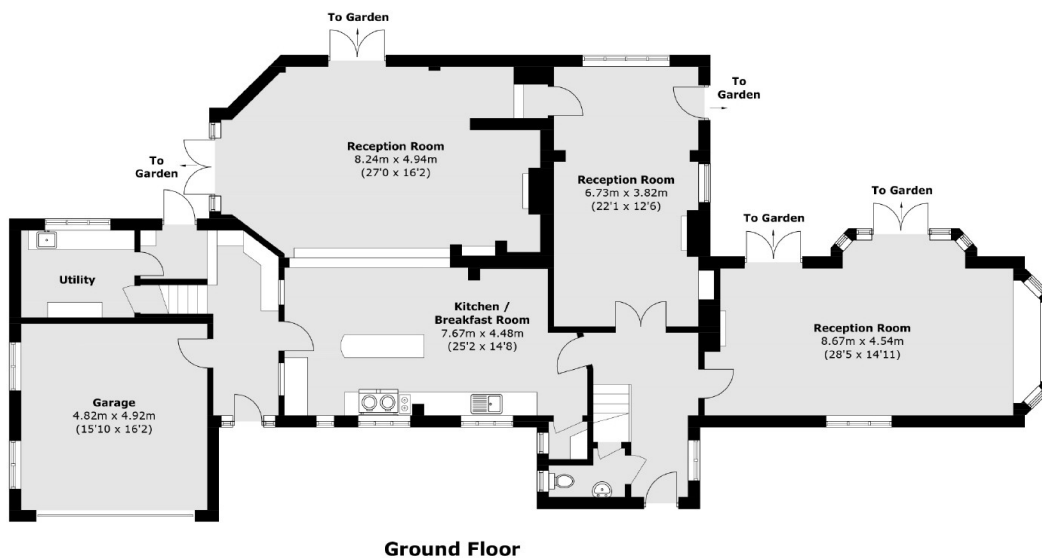
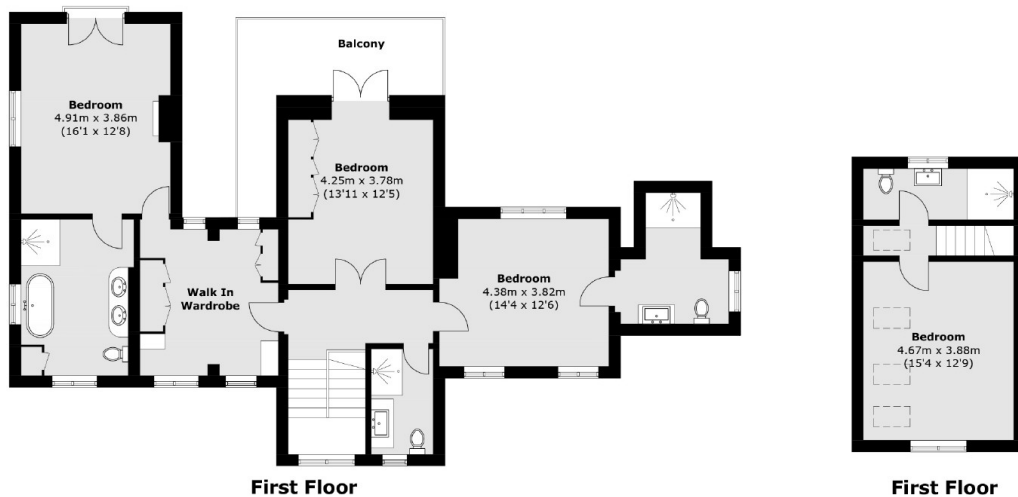
This impressive 3,400 square foot detached house offers a perfect blend of space, comfort, and elegance. Boasting three reception rooms ideal for both entertaining and family living, the home features four generously sized double bedrooms and four bathrooms, providing ample accommodation for a growing family or visiting guests. The property is further enhanced by a beautiful freshwater swimming pool and a landscaped wrap-around garden, offering a private outdoor oasis. Securely gated with driveway parking, this home ensures both privacy and convenience in a sought-after location.

Walton on the Hill is a picturesque village nestled in the Surrey Hills known for its tranquil charm and historic character. The village features an attractive village green, and a peaceful duck pond that serves as a local focal point. The community is close-knit and vibrant, with local pubs, shops, and annual events that reflect its strong village spirit.

Features

- Detached Family House
- Four Double Bedrooms
- Freshwater Swimming Pool
- Double Garage
- Gated Driveway Parking
- Shaker Style Kitchen

Ebbisham Lane, Tadworth, KT20



Total area (approx.): 322.7 sq. m (3,473.4 sq. ft)
(Including Garage)
Balcony: 13.5 sq. m (145.3 sq. ft)

Dexters

Surbiton
2 Claremont Road
Surbiton
KT6 4QU
Lettings
020 8390 6544

Energy Rating: . We aim to make our particulars both accurate and reliable. However they are not guaranteed; nor do they form part of an offer or contract. If you require clarification on any points then please contact us, especially if you're traveling some distance to view. Please note that appliances and heating systems have not been tested and therefore no warranties can be given as to their good working order.

RICS Regulated Estate Agent and Letting Agent

dexters.co.uk