



Lovelace Gardens, KT6

£379,950

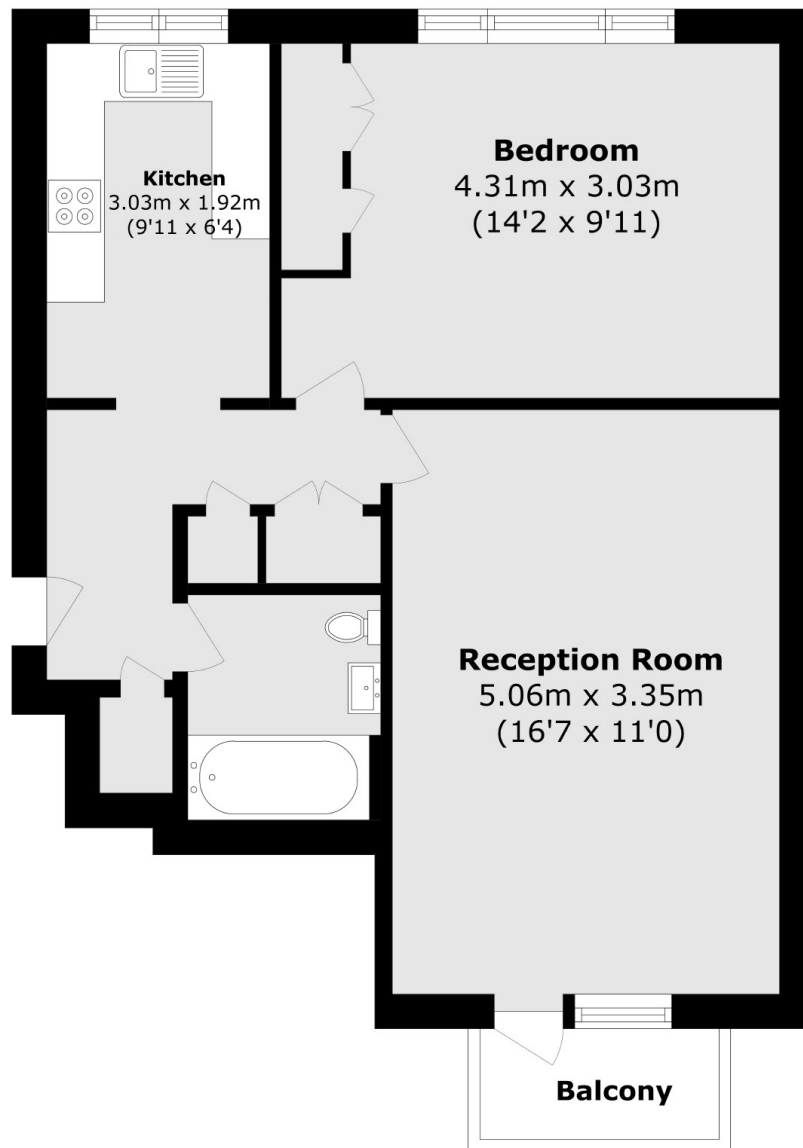
A top floor one bedroom apartment with a spacious reception room, separate kitchen, bathroom and on a desirable road in central Surbiton. The property also benefits from a share of the freehold, first come first served parking, private balcony, plenty of storage throughout and communal gardens.

Lovelace Gardens is a sought after tree lined road and has everything you need on the doorstep, including Surbiton High Street and train station, the river and the desirable Maple Road.

Features

- Top Floor Apartment
- One Double Bedroom
- Private Balcony
- Desirable Road
- Share of Freehold
- Large Reception Room

Lovelace Gardens, Surbiton, KT6



Total area (approx.): 46.9 sq. m (504.8 sq. ft)

Balcony area (approx.): 1.9 sq. m (20.4 sq. ft)