



Kings Drive, KT7
£1,495,000

Dexters



Kings Drive, KT7

A beautiful, detached Edwardian home located in a friendly neighbourhood with its strong sense of community. This property has four generous bedrooms, two bathrooms, and is rear extended to offer spacious internal accommodation. There is off street parking to the front and a beautiful landscaped garden to the rear with fruit and magnolia trees.

The property is entered through an ornate original porch with black and white tiles, the ground floor offers a stunning double reception room with teak, hardwood flooring leading on to a dining space with exposed brick wall and in to the smart, integrated kitchen. There is a further reception room/study with stained glass windows and an oak herringbone floor, a downstairs cloak room and a utility space.

The first floor has four double bedrooms, two with built in wardrobes and two bathrooms. There is also a huge loft space measuring 4.81m x 7.35m, this could be converted (STPP).

There are excellent nurseries, schools and colleges in the area including Thames Ditton infant and junior, Esher college, Hinchley Wood primary, and secondary, as well as Tiffin grammar, Surbiton high, Kingston grammar, Hampton Court House, LEH and Hampton boys.

Features

The property is ideally located near the River Thames, Giggs Hill Green and

Detached Edwardian House

Off Street Parking

Four Bedrooms

Two Bathrooms

West Facing Garden

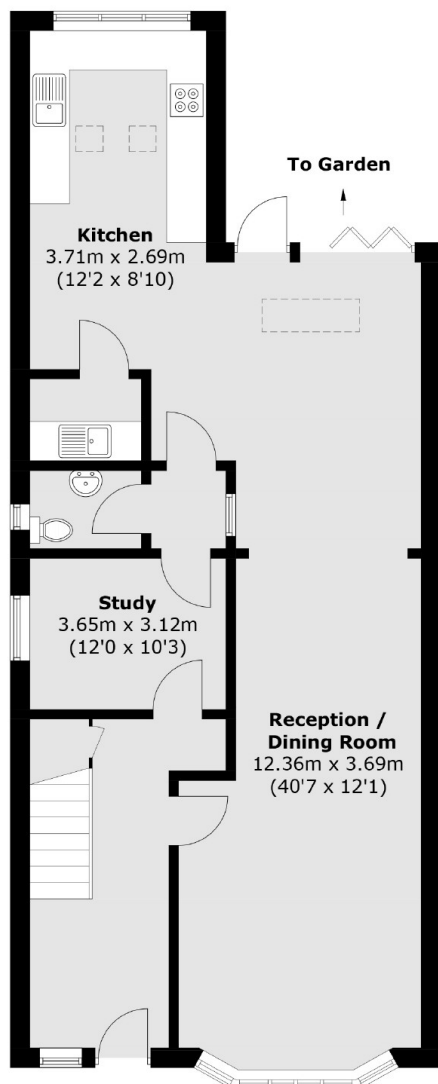
No Onward Chain



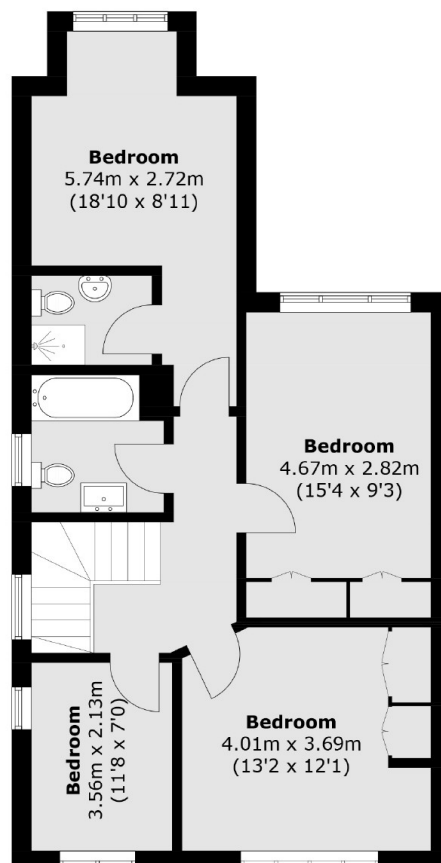




Kings Drive,
Thames Ditton, KT7



Ground Floor



First Floor

Total area (approx.): 144.9 sq. m (1,559.7 sq. ft)