



St. Leonards Square, KT6

£599,950

Dexters



St. Leonards Square, KT6

A beautifully presented period home on a private square, uniquely set back from one of Surbiton's most desirable river roads. Recently fully-refurbished by the current owners, this freehold property offers a wonderfully light and open plan kitchen/diner/living space, two double bedrooms, a well proportioned shower room and WC, and a SW facing garden.

The ground floor is perfect for hosting guests, with a generous living space and a modern kitchen set at the rear of the property. Upstairs there are two large double bedrooms with built-in storage in both. There is also a loft space that can be used for storage.

To the front there is a nicely sized southwest-facing garden, and to the rear there is a small private courtyard, perfect for a morning coffee and secure outdoor storage.

St Leonard's Square is located within one of the most sought after areas in Surbiton. Not only are the river and Maple Road (with the popular farmer's market, trendy bars and upscale restaurants) on the doorstep, the mainline train station (with 16-minute direct trains to London Waterloo) is also a short walk away.

Features

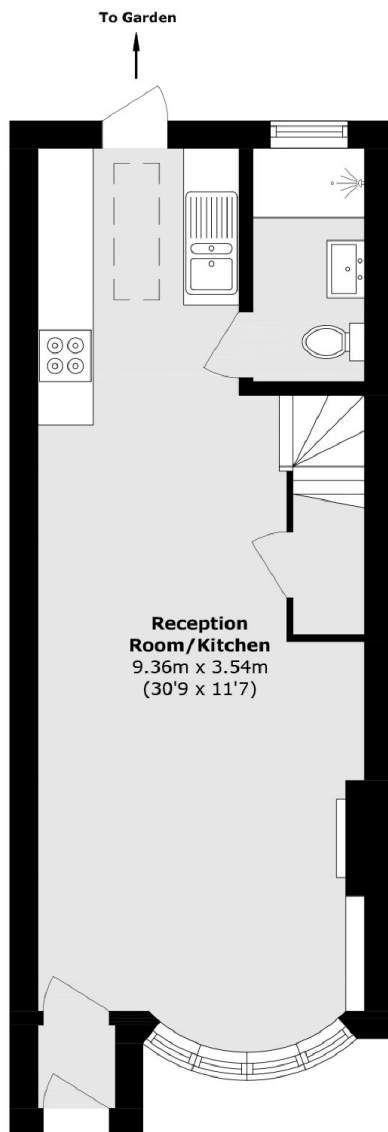
- Two Double Bedrooms
- SW Facing Garden
- Open Plan
- Recently Refurbished
- River Road Location
- Private Road



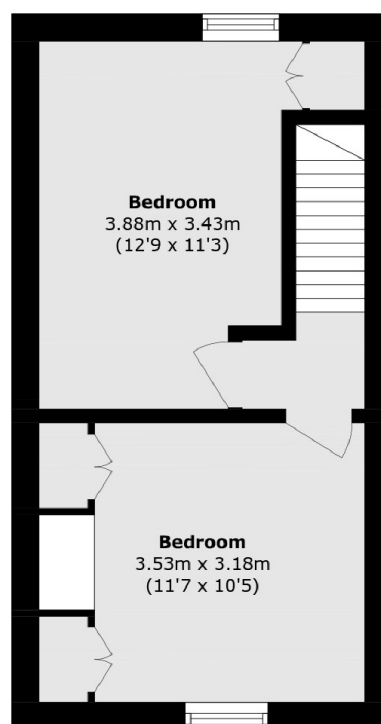




St. Leonards Square, Surbiton, KT6



Ground Floor



First Floor

Total area (approx.): 59.9 sq. m (644.7 sq. ft)

Dexters

Surbiton
2 Claremont Road
Surbiton
KT6 4QU
Sales
020 8390 3939

Energy Rating: . We aim to make our particulars both accurate and reliable. However they are not guaranteed; nor do they form part of an offer or contract. If you require clarification on any points then please contact us, especially if you're traveling some distance to view. Please note that appliances and heating systems have not been tested and therefore no warranties can be given as to their good working order.

 **RICS** | Regulated
Estate Agent
and Letting Agent

dexters.co.uk