



## St. Andrews Square, KT6

£2,195 Per calendar month

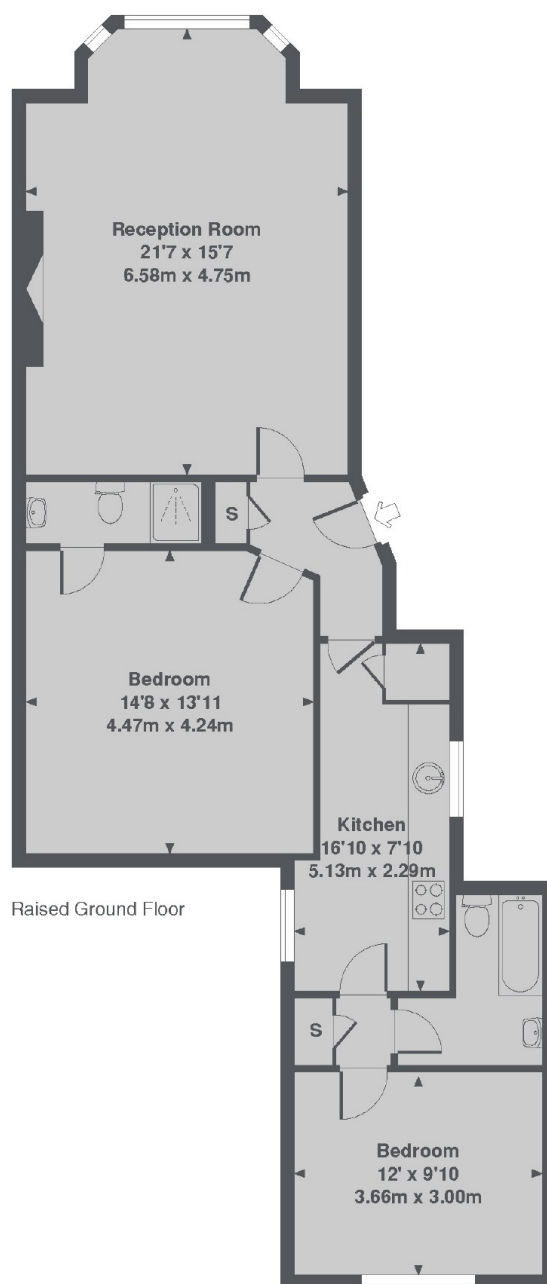
A Victorian conversion apartment full of character and charm! Includes a reception room, a modern kitchen, two double bedrooms and two bathrooms.

Everyone wants to live on St Andrews Square, with the trendy Maple Road, Surbiton High Street, train station and river pretty much on the doorstep!

### Features

- Victorian Conversion
- Period Features
- Modern Kitchen
- Two Double Bedrooms
- Two Bathrooms
- Central Location

# St. Andrews Square, Surbiton, KT6



St. Andrews Square, KT6  
Total Approx. Floor area 894 Sq. Ft. (83.1 Sq. M.)