



Princes Avenue, KT6

£625,000

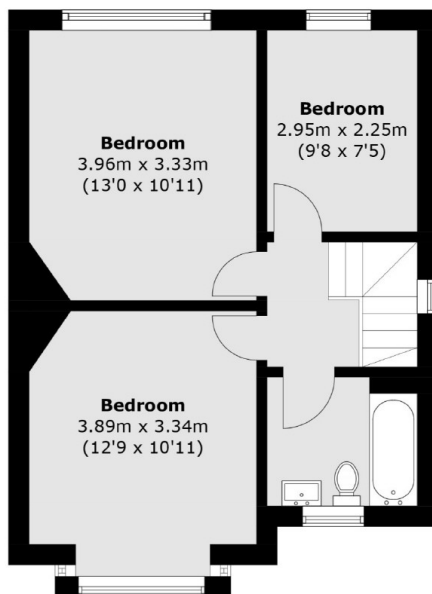
This semi-detached three bedroom family home has a bay front reception room, a separate dining room with french doors on to the sunny garden, a spacious kitchen, a family bathroom and a downstairs W/C. This property also benefits from off-street parking, a garage and as it is on the corner plot, potential to extend further (STPP).

Princes Avenue is a peaceful residential road, approximately half a mile away from Tolworth Train Station and less than half a mile away from a selection of local shops, bars and restaurants.

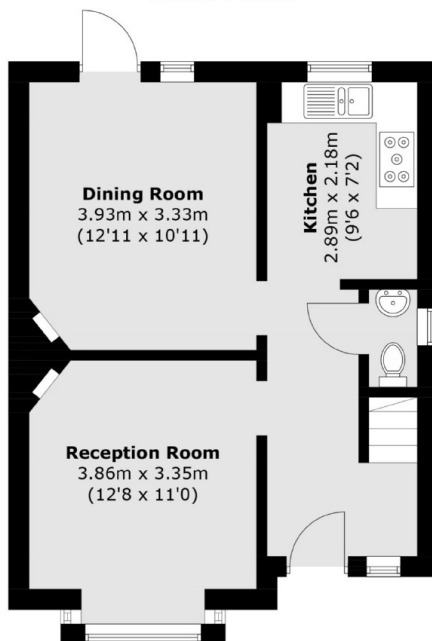
Features

- Three Bedrooms
- Downstairs WC
- Garage
- Scope To Extend (STPP)
- Off Street Parking
- Convenient Location

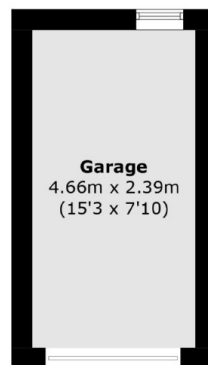
Princes Avenue, Surbiton, KT6



First Floor



Ground Floor



**(Not Shown In Actual
Location / Orientation)**

Total area (approx.): 84.6 sq. m (910.6 sq. ft)
Garage: 11.1 sq. m (119.5 sq. ft)