



Maple Road, KT6

£595,000

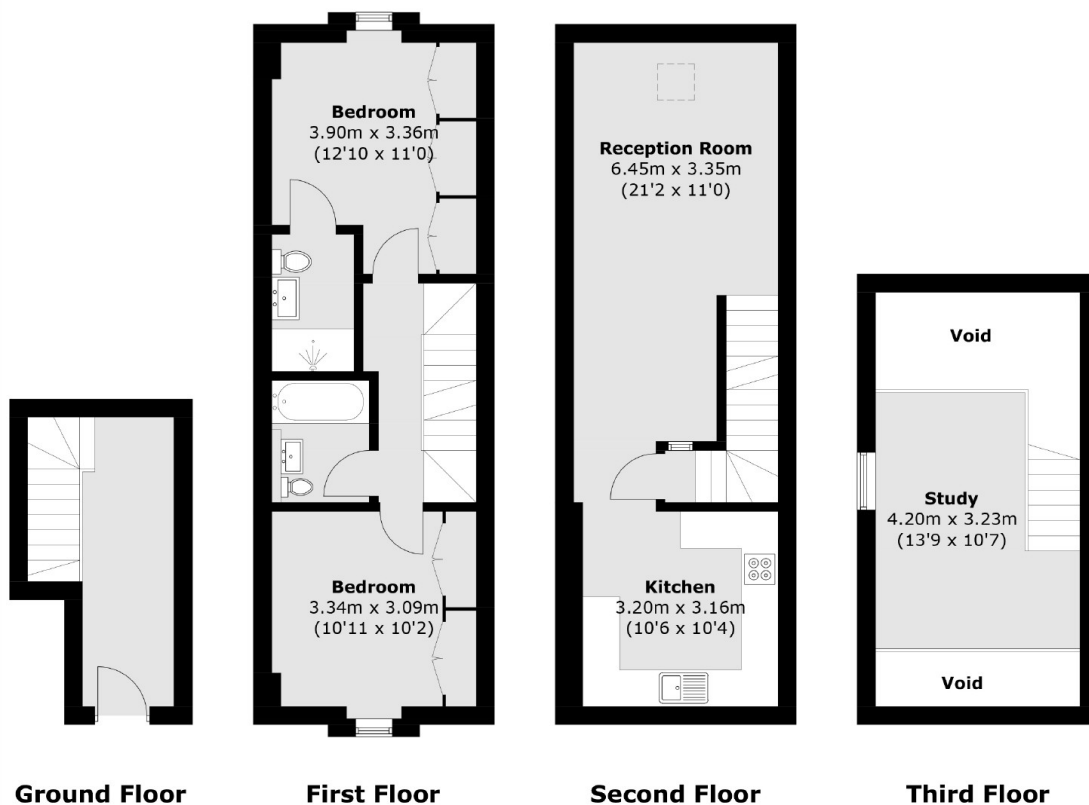
Full of character and charm, this apartment is nestled in a converted church and spaciouly arranged over three floors. There is a large reception room, a modern kitchen, two bedrooms, two bathrooms and a study area.

Maple Road is a highly desirable road with boutique shops, excellent restaurants and gastro pubs. If you need quick access to London, Surbiton's mainline train station is less than half a mile away.

Features

- Converted Church
- Three Floors
- Two Bedrooms
- Two Bathrooms
- Study Area
- Central Location

Maple Road, Surbiton, KT6



Total area (approx.): 96.3 sq. m (1,036.6 sq. ft)
(Excluding Void)