



Tala Close, KT6

£425,000

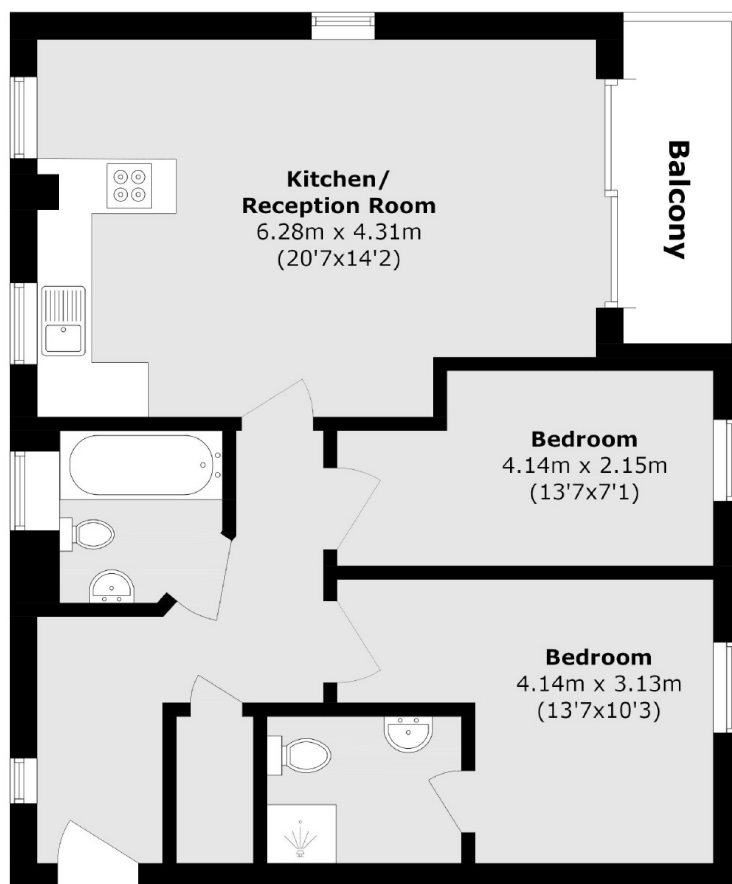
A large two double bedroom, two bathroom apartment situated on the second floor. This property benefits from a healthy private balcony, an allocated parking space as well as plenty storage throughout.

Tala Close is peacefully tucked away with easy access to the A3, Tolworth and Surbiton mainline train stations, and the many cafes and bars of Hook and Ewell Road.

Features

- Modern Apartment
- Private Balcony
- Two Double Bedrooms
- Allocated Parking
- Open Plan Living Space
- No Chain

Tala Close, Surbiton, KT6



Total area (approx.): 62.8 sq. m (676.0 sq. ft)

Balcony area (approx.): 4.7 sq. m (50.6 sq. ft)