



Cleaveland Road, KT6

£849,950

Dexters



Cleaveland Road, KT6

This two bedroom end of terrace Victorian home is located in one of Surbiton's sought after river roads and has scope to renovate and extend throughout (STPP). This period property further benefits from off street parking for two cars, a good sized garden with side access and no onward chain.

Downstairs there is a through reception room with a good sized separate kitchen with breakfast area and access to the private garden. There is also room to do a side return extension (STPP).

Upstairs there are two good sized double bedrooms and a large four piece family bathroom. There is scope to extend further into the loft to create a four bedroom house like others have in the road (STPP).

To the rear is a lovely sunning south west facing garden and the location could not be more convenient for the river and all the amenities of Surbiton town centre.

Cleaveland Road is one of Surbiton's premier river roads with everything you need on your doorstep, including the River Thames, the desirable Maple Road and it's outstanding schools, Surbiton's popular high street and the mainline train station with it's fast links into London.

Features

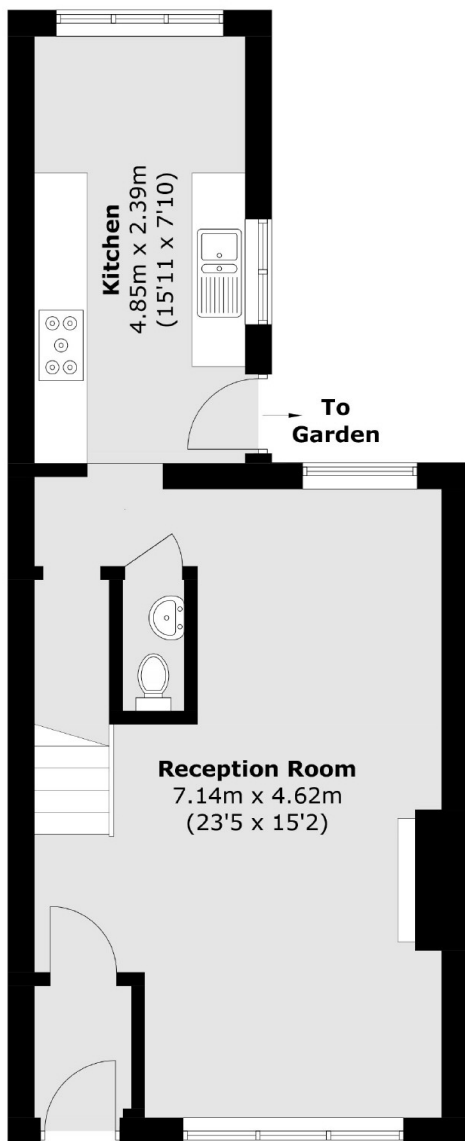
- Two Double Bedrooms
- Scope to Extend
- Prime River Road
- Off Street Parking
- South West Facing Garden
- No Onward Chain



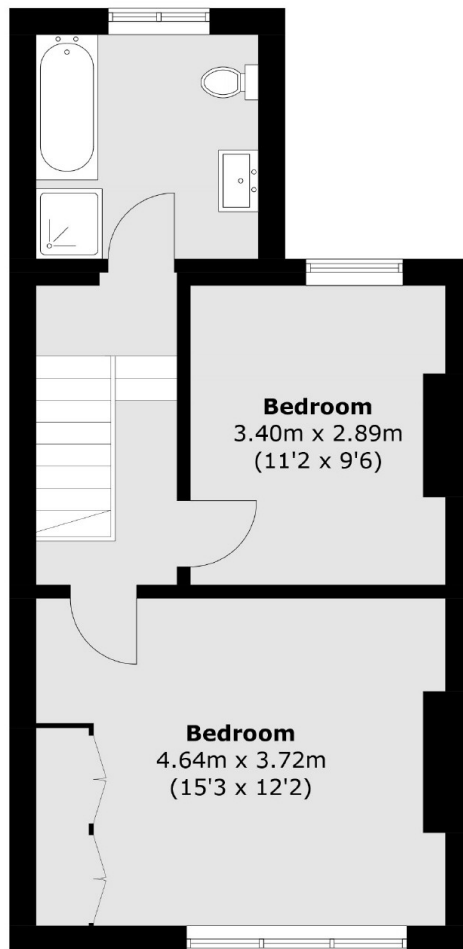




Cleaveland Road, Surbiton, KT6



Ground Floor



First Floor

Total area (approx.): 86.4 sq. m (930.0 sq. ft)