



Raeburn Avenue, KT5

£1,095,000

This spacious seven bedroom, six bathroom contemporary property is immaculate throughout. Offering high end finishes for luxury living and set over three floors this house is an ideal family home. It has plenty of off street parking to the front and a lovely sunny garden to the rear complete with an annex that has it's own kitchen and en-suite making it an ideal home office.

Raeburn Avenue is in the family-friendly area of Berrylands, approximately a mile away from four mainline train stations and in great catchment area for excellent local schools.

Features

Semi Detached
Seven Bedrooms
Six Bathrooms
Immaculate Throughout
Off Street Parking
Large Annex



Raeburn Avenue, KT5

The ground floor has a stunning open-plan Italian designed kitchen and reception room with granite worktops and top end' Franke' appliances. There is a separate reception space with large bay window and this floor also offers a double bedroom, a utility room, and a separate shower room.

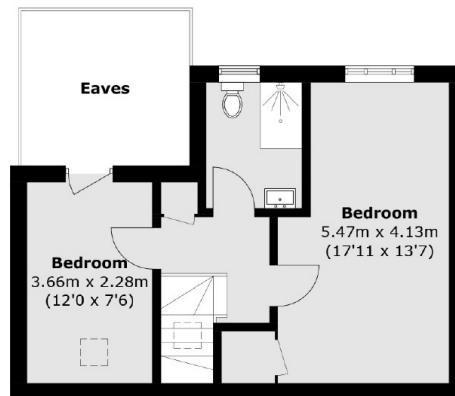
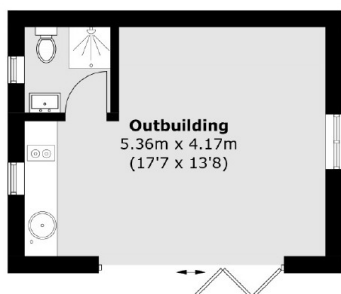
On the first floor is the master bedroom, over looking the rear garden, and with its own en-suite bathroom. There are also three further generous bedrooms and a luxurious family bathroom. The second floor offers two additional bedrooms and a family shower room, this would make an ideal guest suite.

Externally, the property has a large detached annex in the garden with a fully equipped kitchen, shower room, and a spacious reception area. This versatile space could be a home office, or even a rental opportunity.

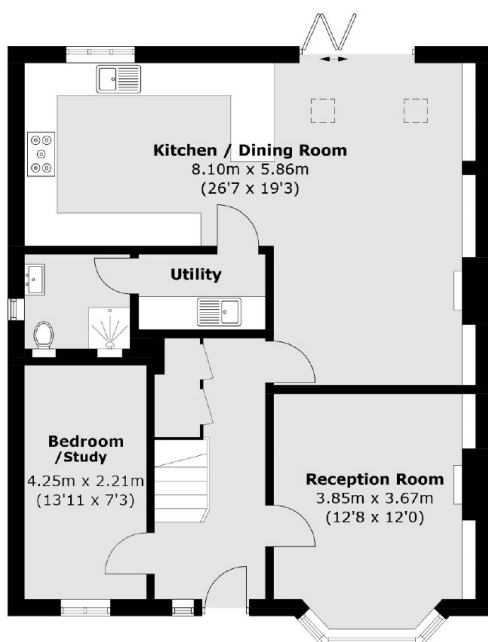
This property also has solar panels, CAT6 Cabling, and an EV charger for electric vehicles.



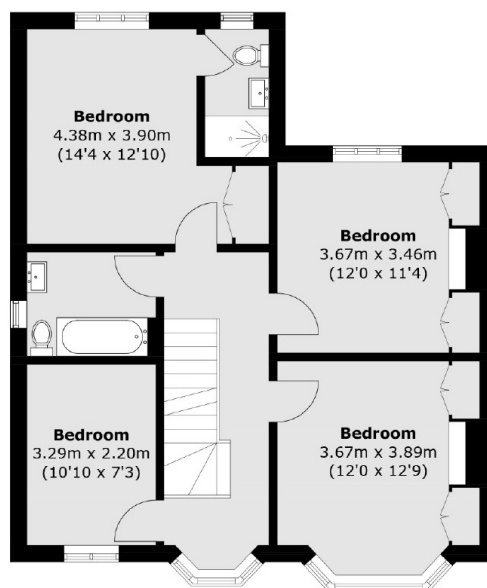
Raeburn Avenue, Surbiton, KT5



Second Floor



Ground Floor



First Floor

Total area (approx.): 186.7 sq. m (2,009.5 sq. ft)
Outbuilding (approx.): 23.3 sq. m (250.8 sq. ft)
(Excluding Eaves)