



Indigo Square, KT6

£675,000

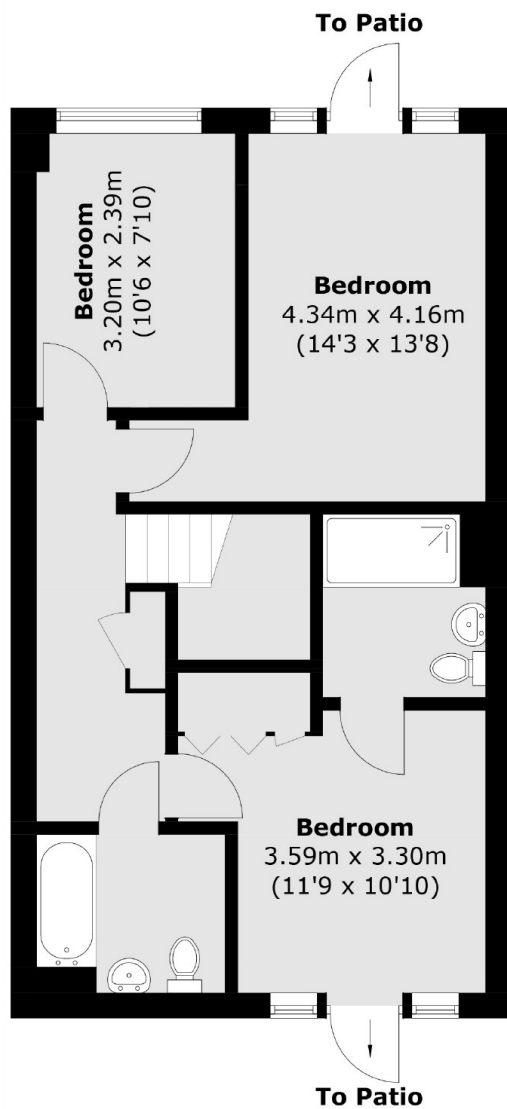
A stunning split level luxury apartment, away from the hustle and bustle of the main road, with a large wrap-around reception room, three quiet bedrooms, two bathrooms, a private garden and secure underground parking, this ground floor apartment offers plenty of space and is ideally located in the heart of Surbiton.

Indigo Square development is in central Surbiton, moments from the idyllic River Thames and 7 minutes walk to Surbiton train station, with fast access to London Waterloo. The development also features a nursery and a communal garden / playground, perfect for those with families or looking to settle down.

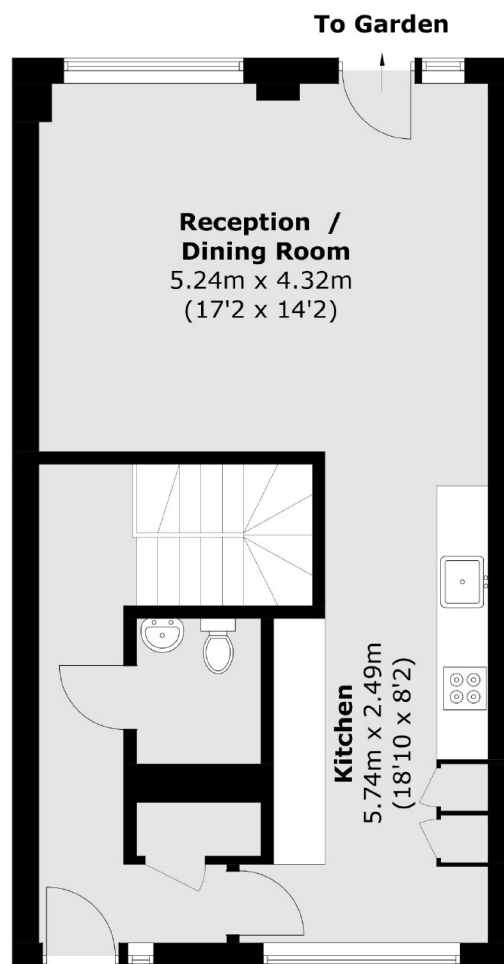
Features

Two Reception Rooms
Three Bedrooms
1,116 sq ft
Private Garden
Underground Parking
Central Location

Indigo Square, Surbiton, KT6



Basement



Ground Floor