



Portsmouth Road, KT6

£650,000

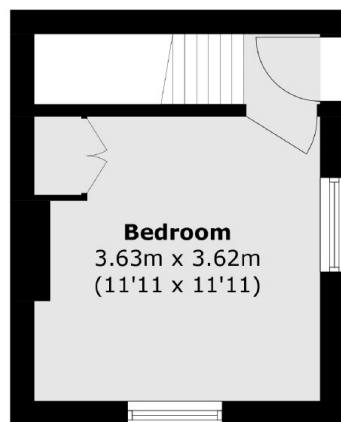
A wonderful split level Victorian maisonette, situated on a prime river road and offered with a share of freehold, two double bedrooms, a modern kitchen and bathroom, reception room and a spacious private garden. There is also off street parking and no onward chain

Portsmouth Road runs along the idyllic River Thames with Surbiton high street and the mainline train station, with fast train to Waterloo, approximately half a mile away.

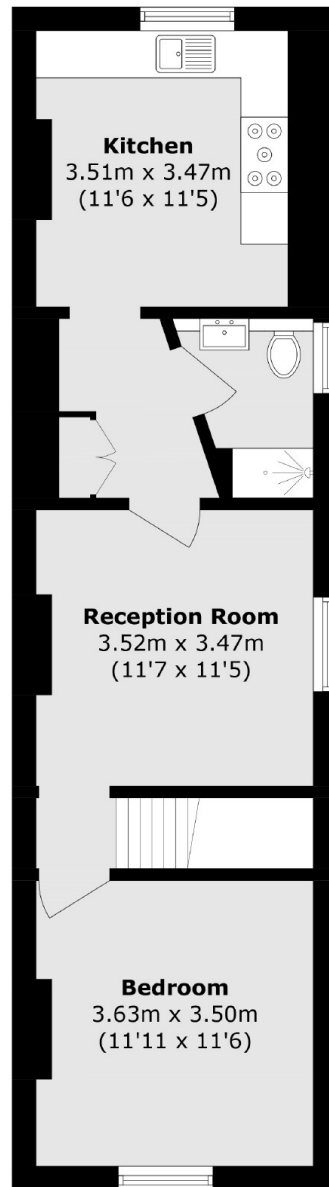
Features

- Victorian
- Ground Floor and First Floor
- Two Double Bedrooms
- Private Garden
- Off Street Parking
- No Onward Chain

Portsmouth Road, Surbiton, KT6



Ground Floor



First Floor

Total area (approx.): 64.8 sq. m (697.5 sq. ft)

Dexters

Surbiton
2 Claremont Road
Surbiton
KT6 4QU
Sales
020 8390 3939

Energy Rating: D. We aim to make our particulars both accurate and reliable. However they are not guaranteed; nor do they form part of an offer or contract. If you require clarification on any points then please contact us, especially if you're traveling some distance to view. Please note that appliances and heating systems have not been tested and therefore no warranties can be given as to their good working order.

 **RICS** | Regulated
Estate Agent
and Letting Agent

[dexters.co.uk](https://www.dexters.co.uk)