



Meadway, KT5

£499,950

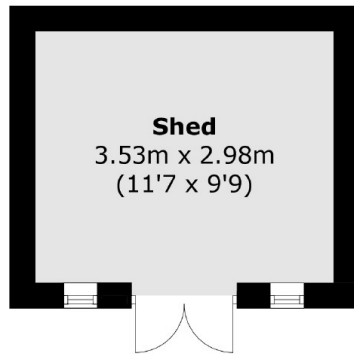
This beautifully presented end of terrace home includes an open plan kitchen/dining room, three bright and spacious bedrooms and a large landscaped rear garden. This property also benefits from a garage, shed with ample room for storage and a driveway.

Meadway has easy access to the A3 and is conveniently less than half a mile away from Tolworth train station and a vast selection of local shops, bars and restaurants.

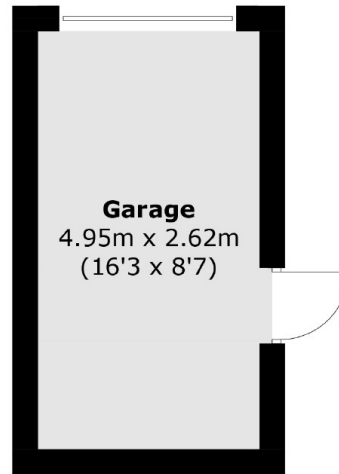
Features

- End Of Terrace
- Open Plan Kitchen/Lounge
- Three Bedrooms
- Private Garden
- Landscaped Garden
- Garage

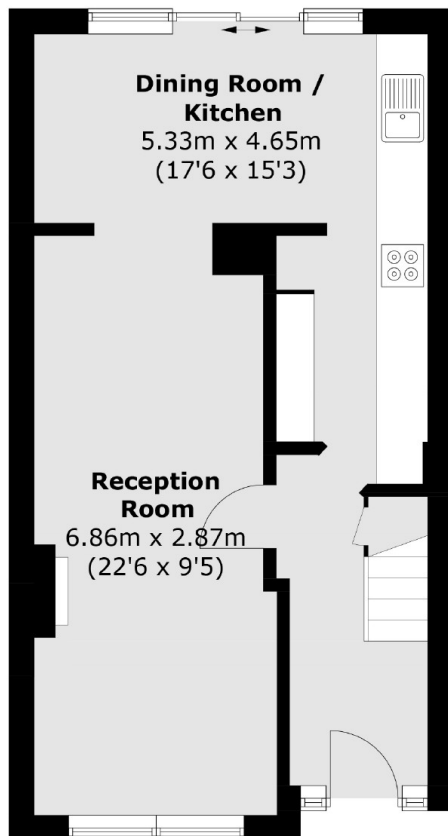
Meadway, Surbiton, KT5



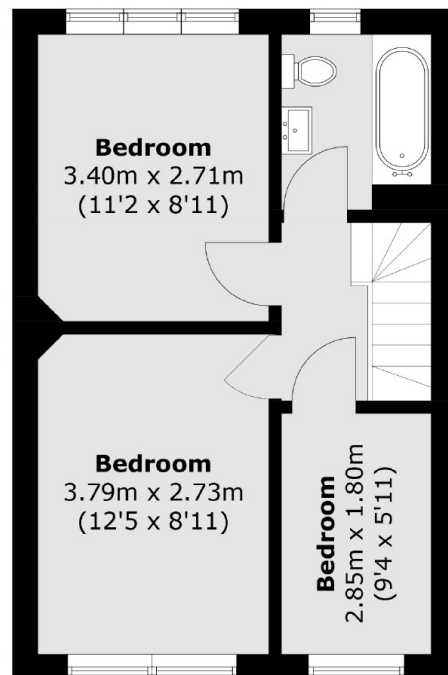
(Not Shown In Actual
Location / Orientation)



(Not Shown In Actual
Location / Orientation)



Ground Floor



First Floor

Total area (approx.): 76.8 sq. m (826.6 sq. ft)
Garage / Shed: 23.8 sq. m (256.2 sq. ft)