

St. Mark's Hill, KT6

£399,950

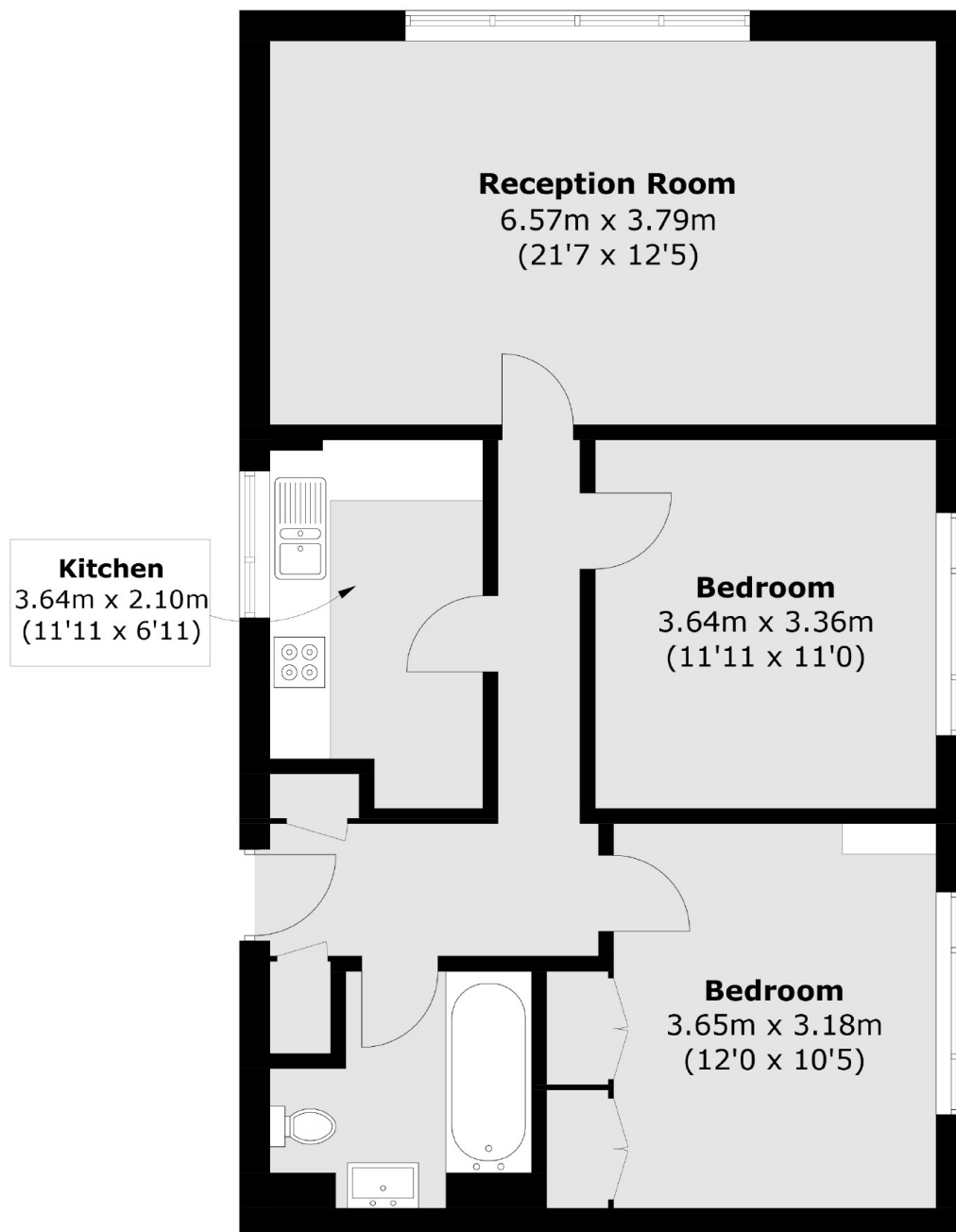
A large top floor, two double bedroom apartment set within an imposing block, this flat offers incredible views over South West London. This property is ideally located in central Surbiton, it has a separate kitchen and living areas, two generous bedrooms and well proportioned family bathroom.

St Marks Hill is nestled in the heart of Surbiton with everything you need on the doorstep, including the mainline train station and a variety of shops, bars and restaurants.

Features

- Top Floor
- Two Double Bedrooms
- Central Location
- Efficient Transport Links
- Lift Access
- Amazing Views

St. Mark's Hill, Surbiton, KT6



Total area (approx.): 75.9 sq. m (817.0 sq. ft)

Dexters

Surbiton
2 Claremont Road
Surbiton
KT6 4QU
Sales
020 8390 3939

Energy Rating: E. We aim to make our particulars both accurate and reliable. However they are not guaranteed; nor do they form part of an offer or contract. If you require clarification on any points then please contact us, especially if you're traveling some distance to view. Please note that appliances and heating systems have not been tested and therefore no warranties can be given as to their good working order.

 **RICS** | Regulated
Estate Agent
and Letting Agent

[dexters.co.uk](https://www.dexters.co.uk)