



Surbiton Hill Park, KT5

£575,000

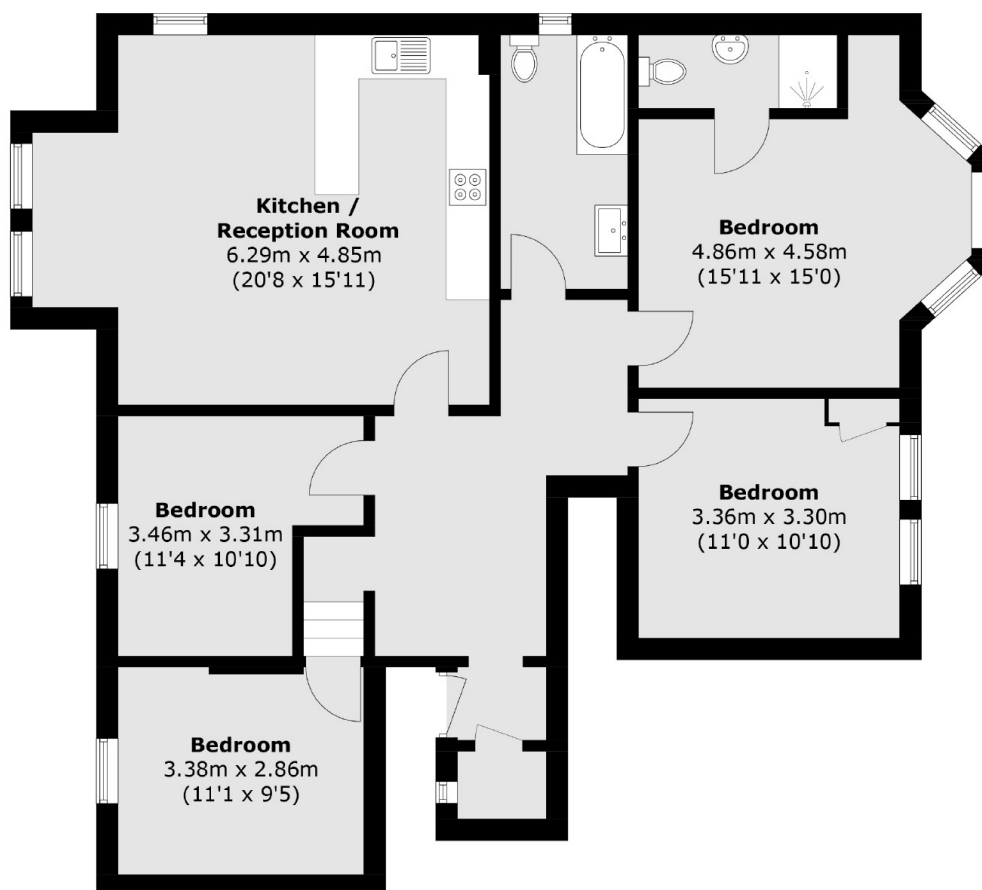
This generous apartment has been recently refurbished throughout and offers over a spacious 1100 sq ft of living space. There are four bedrooms, an open plan kitchen/dining/living room, two bathrooms, one of which is an en-suite and a large communal garden. The property further benefits from having its own front door, a private decking area, no onward chain and over 950 years remaining on the lease.

Surbiton Hill Park is 0.6 miles from Berrylands station and just over half a mile from Surbiton town centre with a vast selection of local shops, gastro pubs and the mainline train station.

Features

- Four Bedrooms
- Private Decking
- Communal Garden
- No Onward Chain
- Recently Refurbished
- Long Lease

Surbiton Hill Park, Surbiton, KT5



Total area (approx.): 105.9 sq. m (1,139.8 sq. ft)