



## Hook Rise North, KT6

£350,000

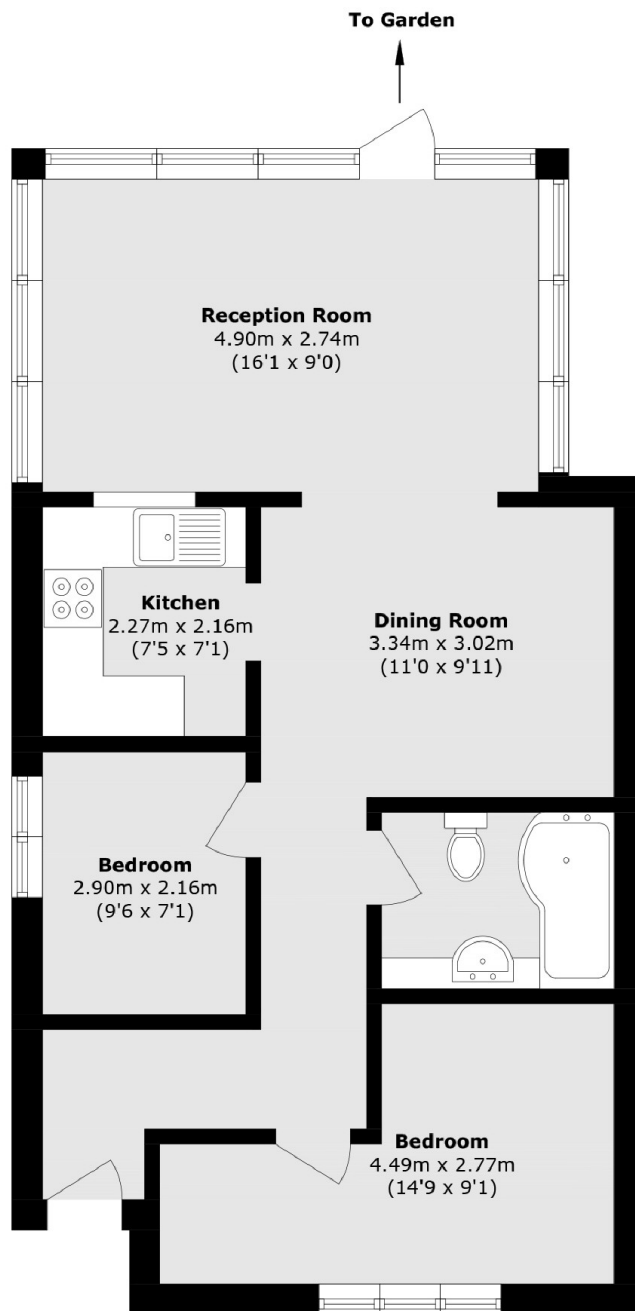
An immaculately presented ground floor maisonette. There is a private entrance, two bedrooms, separate kitchen and open plan reception/dining room. This property further benefits from a sunny private rear garden, off-street parking and a share of the freehold.

Blaney Court is on the corner of the peaceful residential road Princes Avenue and is less than half a mile away from Tolworth train station and also less than half a mile away from a selection of local shops, bars and restaurants.

### Features

- Maisonette
- Two Bedrooms
- Private Rear Garden
- Off Street Parking
- Well Presented
- Open Plan Living

# Hook Rise North, Surbiton, KT6



Total area (approx.): 58.3 sq. m (627.5 sq. ft)

## Dexters

Surbiton  
2 Claremont Road  
Surbiton  
KT6 4QU

Sales  
020 8390 3939

Energy Rating: D. We aim to make our particulars both accurate and reliable. However they are not guaranteed; nor do they form part of an offer or contract. If you require clarification on any points then please contact us, especially if you're traveling some distance to view. Please note that appliances and heating systems have not been tested and therefore no warranties can be given as to their good working order.

 **RICS** | Regulated  
Estate Agent  
and Letting Agent

[dexters.co.uk](https://www.dexters.co.uk)