



## Grove Road, KT6

### £449,950

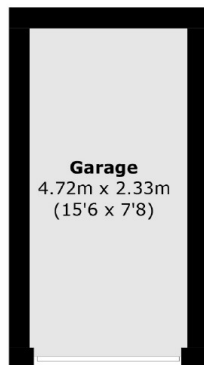
A generously proportioned, two double bedroom apartment, with a private balcony. This property is well presented throughout, it has a share of freehold and communal gardens. There is a separate kitchen and a lounge/dining area leading out on to the lovely balcony.

Grove Road is one of Surbiton's premier river roads. Situated between the desirable Maple Road, with its modern variety of independent shops, bars and restaurants and Portsmouth Road, which runs alongside the idyllic River Thames.

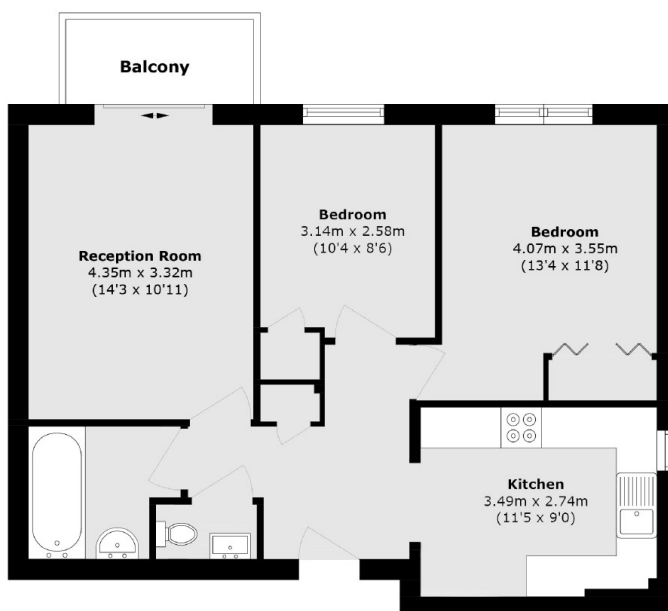
### Features

- Purpose Built
- Two Double Bedrooms
- River Road
- Share Of Freehold
- Central Location
- Private Balcony

# Grove Road, Surbiton, KT6



**Outbuilding**



**Ground Floor**

Total area (approx.): 61.3 sq. m (659.8 sq. ft)

Balcony area (approx.): 3.4 sq. m (36.5 sq. ft)

Outbuilding area (approx.): 10.9 sq. m (117.3 sq. ft)