



## Effingham Road, KT6

### £532,500

A large and beautifully presented two double bedroom conversion apartment, set within an attractive detached Edwardian building, with allocated parking, in the highly sought after Long Ditton area. Being a detached building and consisting of only three flats the building offers more privacy and also allows for front and rear outlooks which combines with high ceilings and bay windows to create light and airy accommodation.

Surbiton train station is less than a mile away with it's fast and direct trains to London Waterloo, as is the bustling high street.

### Features

- Two Double Bedrooms
- Allocated Off-Street Parking
- Large Communal Garden
- Share Of Freehold
- Power for Electric Car Charger
- Own Bike Shed





## Effingham Road, KT6

Other features include, a mixture of gas radiators/underfloor heating, fitted wardrobes, allocated parking with electric power and a communal garden with own bike shed included.

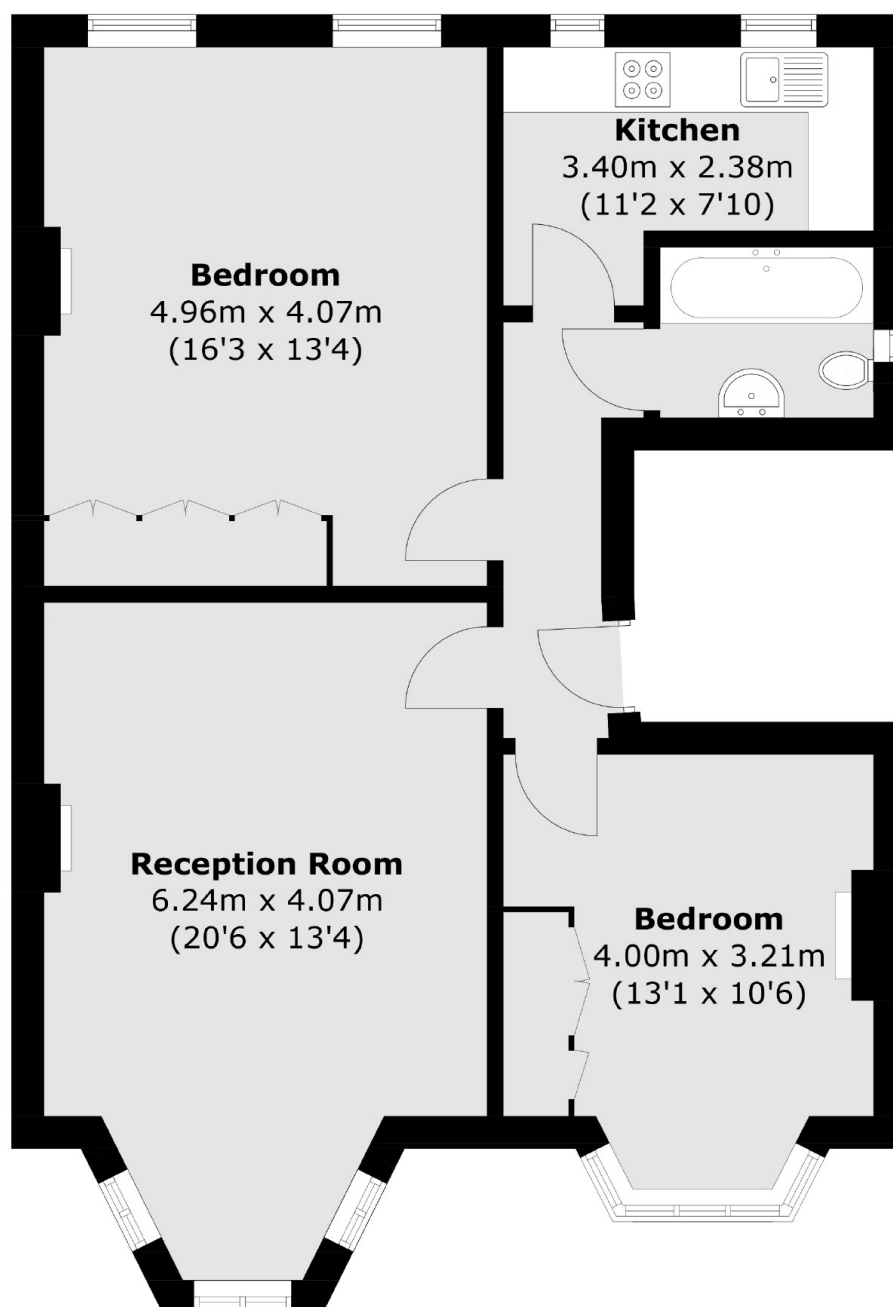
The property benefits from a share of the freehold.







# Effingham Road, Surbiton, KT6



Total area (approx.): 71.3 sq. m (767.5 sq. ft)