



## Effingham Road, KT6

£599,950

A large and beautifully presented two double bedroom conversion apartment, set within an attractive detached Edwardian building, with allocated parking, in the highly sought after Long Ditton area. Being detached building and consisting of only three flats the building offers more privacy and also allows for front and rear outlooks which combines with high ceilings and bay windows to create light and airy accommodation.

Surbiton train station is less than a mile away with it's fast and direct trains to London Waterloo, as is the bustling high street.

### Features

- Edwardian Property
- Two Double Bedrooms
- Allocated Off-Street Parking
- Large Communal Garden
- Share Of Freehold
- Period Features



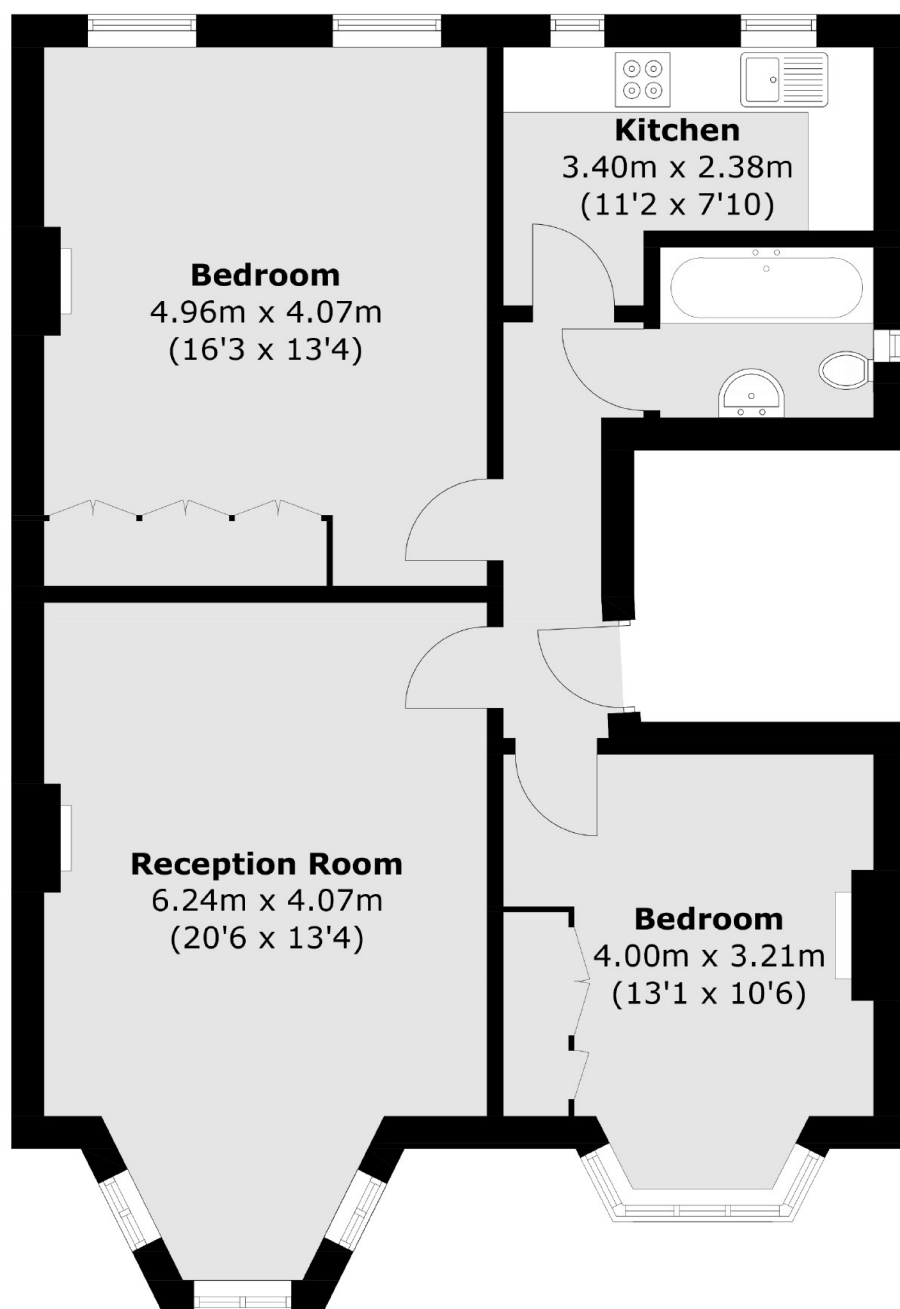
## Effingham Road, KT6

Other features include, a mixture of gas radiators/underfloor heating, fitted wardrobes, allocated parking with electric power and a communal garden with own bike shed included.

The property benefits from a share of the freehold.



# Effingham Road, Surbiton, KT6



Total area (approx.): 71.3 sq. m (767.5 sq. ft)

## Dexters

Surbiton  
2 Claremont Road  
Surbiton  
KT6 4QU  
Sales  
020 8390 3939

Energy Rating: D. We aim to make our particulars both accurate and reliable. However they are not guaranteed; nor do they form part of an offer or contract. If you require clarification on any points then please contact us, especially if you're traveling some distance to view. Please note that appliances and heating systems have not been tested and therefore no warranties can be given as to their good working order.

 **RICS** | Regulated  
Estate Agent  
and Letting Agent

[dexters.co.uk](https://www.dexters.co.uk)