



Anglers Reach, KT6

£615,000

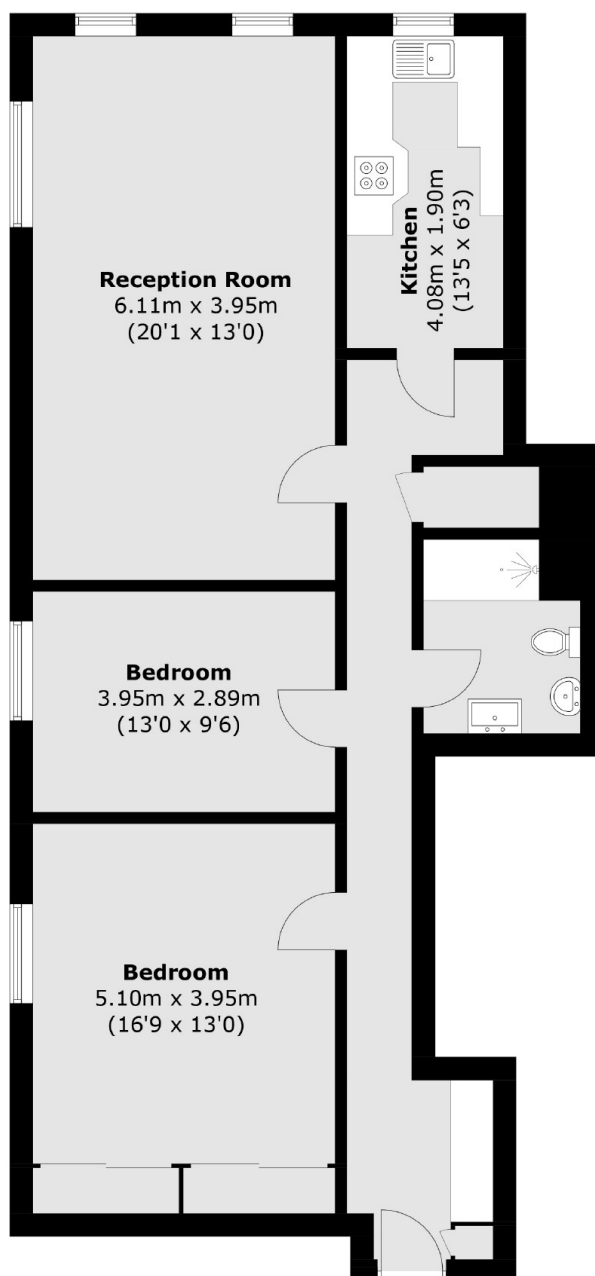
This generously sized and light-filled apartment offers breathtaking panoramic views of the river, Home Park, and the surrounding area. It features a spacious master bedroom, another large double bedroom, a well-proportioned reception room with dual-aspect windows overlooking the river, a generous kitchen, and a bathroom.

Anglers Reach is a popular block situated in a tree-lined road in the centre of Surbiton. The River Thames is on your door step and Surbiton's high street, mainline station as well as Kingston with it's shops and restaurants are all within 0.5 miles.

Features

- River Side Apartment
- Two Double Bedrooms
- Stunning River Views
- Close to Station
- Over 1000 Sq Ft
- Bright and Spacious

Anglers Reach, Surbiton, KT6



Total area (approx.): 93.5 sq. m (1,006.4 sq. ft)

Dexters

Surbiton
2 Claremont Road
Surbiton
KT6 4QU

Sales
020 8390 3939

Energy Rating: C. We aim to make our particulars both accurate and reliable. However they are not guaranteed; nor do they form part of an offer or contract. If you require clarification on any points then please contact us, especially if you're traveling some distance to view. Please note that appliances and heating systems have not been tested and therefore no warranties can be given as to their good working order.

 **RICS** | Regulated
Estate Agent
and Letting Agent

[dexters.co.uk](https://www.dexters.co.uk)